



Annual Statistical Report



2011

Tom Corbett
Governor

John E. Wetzel
Secretary

PRS Overview

The Bureau of Planning, Research and Statistics (PRS) directs the maintenance of historical data records for the Department and conducts ongoing planning, research, and evaluation activities designed to provide key decision-makers with quantitative data analysis for use in formulating and evaluating departmental policies and practices. Specific functions performed by the Office include planning, program evaluation, corrections research, data analysis, statistical repository, policy development and analysis.

Kristofer Bret Bucklen, Director
Planning, Research and Statistics

STAFF

- Nicolette Bell.....Chief of Research & Evaluation
- Robert FlahertyChief of Data Analysis & Management Support
- Lois Good.....Community Corrections Analyst
- Runglux Kuba.....Information Coordinator
- Dean Lategan.....Population and Projections Analyst
- Stacey O’Neill.....Security Data Analyst
- Lorraine Russell.....Research and Data Analyst
- Angelo Santore.....Reentry/Program Measures Analyst
- Joseph Tomkiel.....Research Manager

Annual Statistical Report



2 0 1 1

Report Preparation

Report Preparation

Authors.....Dean Lategan
Stacey O’Neill
Angelo Santore

Technical and Editorial Support.....Planning, Research and Statistics Staff

Note: Statistics in this report will not match statistics reported in the Bureau of Justice Statistics (BJS) "Prisoners in 2011" report. The BJS report is a national report based on a survey of all 50 states, containing different accounting rules from those used to generate this report. The primary difference is that this report counts all inmates under Pennsylvania Department of Corrections custody, whereas most of the tables/figures in the BJS report only include inmates who are sentenced and who have a maximum sentence of 1 year or more.

**For additional information contact
The Bureau of Planning, Research and Statistics at
(717) 728-4051 Fax (717) 728-4180**



Secretary
John E. Wetzel



COMMONWEALTH OF PENNSYLVANIA
DEPARTMENT OF CORRECTIONS
1920 Technology Parkway
Mechanicsburg, PA 17050
(717) 728-4109

We are pleased to present the 2011 Annual Statistical Report on Pennsylvania's state prison system. This report provides a statistical overview of inmates admitted to, incarcerated in, and released from the Pennsylvania Department of Corrections in Calendar Year 2011. Additionally, this report offers limited historical perspective on inmate profile changes over the last ten years.

During the past year, the Department has implemented internal procedural efficiencies to help reduce inmate population. We are also pursuing legislative reforms based upon best practices that have been successful in other states which should further reduce population and costs, ultimately resulting in increased public safety.

One of the key methods to accomplishing our goals is the utilization of timely, accurate, and reliable data to ensure effective planning and evaluation of reforms in a public and transparent manner. The Department has historically and will continue to rely on data to inform us of our progress. Not only will this data aid us in achieving our reform goals, but this information also help us to effectively manage the Department's more than 15,000 employees, 27 prisons, 53 community corrections centers and facilities, and more than 51,000 inmates.

We trust that this annual statistical report will serve to increase your understanding of the state prison system, its inmate population, and the significant challenges which the Department, as well as Pennsylvania's entire criminal justice system, are currently addressing.

Sincerely,

A handwritten signature in black ink, appearing to read "John E. Wetzel", written in a cursive style.

John E. Wetzel
Secretary of Corrections

[This page intentionally left blank]

Section I: Receptions

Receptions Highlights..... 1

Table 1: State Prison Receptions by Type and Offender Gender—2001 through 2011..... 2

Table 2: State Prison Receptions by Committing County and Offender Gender in 2011..... 3

Table 3: Ten Counties with the Highest Court Commitment Activity in 2011..... 4

Table 4: Court Commitments by County for 2010 and 2011..... 5

Table 5: Court Commitments Received from 2001 through 2011 by Age Group 6

Table 6: Profile of Court Commitments Received by Age, Race, and Gender in 2010..... 7

Table 7: Profile of Court Commitments Received by Age, Race, and Gender in 2011..... 7

Table 8: Comparison of Court Commitments by Offense for 2010 and 2011..... 8

Table 9: Court Commitments by Minimum Sentence and Offender Gender in 2011..... 9

Table 10: Court Commitments by Maximum Sentence and Offender Gender in 2011..... 10

Table 11: Profile of Offenders Serving a Life Sentence Received from 2001 through 2011..... 11

Section II: Population

Population Highlights..... 12

Table 12: Rank Order of Ten Counties with Highest State Incarceration Rate for 2010 and 2011. 13

Table 13: Inmate Population by County and Gender on December 31—Calendar Years 2010..... 14
and 2011

Table 14: Rank-Ordered Comparison of Civilian Population and State Incarceration Rates..... 15
for 2010 and 2011

Table 15: Inmate Population Versus State Institutional Capacity from 2001 through 2011..... 16

Table 16: Month-End Population from January 2001 through December 2011..... 17

Table 17: Inmate Population by Facility, Race, Gender, and Age on December 31, 2010..... 18

Table 18: Inmate Population by Facility, Race, Gender, and Age on December 31, 2011..... 18

Table 19: Uniform Crime Report (UCR) Offense Groupings by Inmate Race and Gender..... 19
as of December 31, 2011

Table 20: Status of Inmates on December 31—Calendar Years 2001 through 2011..... 20

Contents

Table 21: Inmates by Primary Offense on December 31—Calendar Years 2010 and 2011.....	21
With 2011 Average Sentence Length	
Table 22: Demographic Profile of Inmates on December 31—Calendar Years 2010 and 2011.....	22
Table 23: Long-Term Inmates on December 31—Calendar Years 2010 and 2011.....	23
Table 24: Number of Inmates by Facility Serving a Life Sentence on December 31.....	23
Calendar Years 2010 and 2011	
Table 25: Ten Highest Counties with Inmates Serving a Life Sentence.....	24
Calendar Years 2010 and 2011	
Table 26: Age of Inmates Serving a Life Sentence on December 31.....	24
Calendar Years 2010 and 2011	
Table 27: Time Served by Inmates Serving Life as of December 31.....	25
Calendar Years 2010 and 2011	
Table 28: Profile of Inmates Under Death Sentence on December 31.....	25
Calendar Years 2010 and 2011	

Section III: Releases

Releases Highlights.....	26
Table 29: Average Time Served by Offense for Inmates Released During 2011.....	27
Table 30: Inmate Releases by Type—Calendar Years 2010 and 2011.....	28
Table 31: Average Months Served by Inmates Initially Released—Calendar Years 2001.....	29
through 2011	
Table 32: Releases by Type for Inmates Serving a Life Sentence—Calendar Years 2001.....	30
through 2011	

Section IV: Miscellaneous

Miscellaneous Highlights.....	31
Table 33: Number of Breach Escapes from 2001 through 2011 by Facility.....	32
Table 34: Number of Walk Away Escapes from 2001 through 2011 by Facility.....	32
Table 35: Complement Control by Location as of December 31, 2011.....	33

Section V: Glossary

Glossary.....	34-35
---------------	-------

Graphs

Graph 1: State Prison Receptions by Type—2001 to 2011..... 2

Graph 2: Court Commitments by Major Contributing Counties in 2011..... 4

Graph 3: Percentage of Court Commitments by Age Group—2001 Compared to 2011..... 6

Graph 4: Court Commitments by Minimum Sentence Distribution—2010 and 2011..... 9

Graph 5: Court Commitments by Maximum Sentence Distribution—2010 and 2011..... 10

Graph 6: Incarceration Rates for the Top Ten Counties—2010 and 2011..... 13

Graph 7: Offender Population versus Capacity—2003 to 2011..... 16

Graph 8: Monthly Population Change 2001, 2006, and 2011..... 17

Graph 9: Inmate Status as of Year-End—2001 to 2011..... 20

Graph 10: Projected Population vs. Bed Space..... 26

Graph 11: Distribution by Release Type—2010 and 2011..... 28

Graph 12: Average Time Served by Inmates Released—Calendar Years 2001 through 2011..... 29

[This page intentionally left blank]

Commonwealth of Pennsylvania
Department of Corrections



2011
Annual Statistical
Report

Section I

Receptions



2011
Annual Statistical
Report

Highlights

Receptions

Between 2001 and 2011, the number of inmates admitted into the Department increased by 41.9%, from 12,593 in 2001 to 17,875 in 2011.*

From 2001 through 2011, the number of parole violator admissions increased by 39.3%, from 4,955 in 2001 to 6,900 in 2011.

The number of court commitments grew by 46.1%, from 7,510 in 2001, to 10,969 in 2011.

Philadelphia County accounted for 21.3% of all new court commitments in 2011.

In 2011, more than half (56.7%) of all new court commitments were sentenced to a minimum sentence of two years or less. These inmates may be eligible for some type of release by 2013.

Of the total new court commitments, 85% received a maximum sentence of ten years or less. These inmates will complete their sentence and be released back to the community no later than 2021.

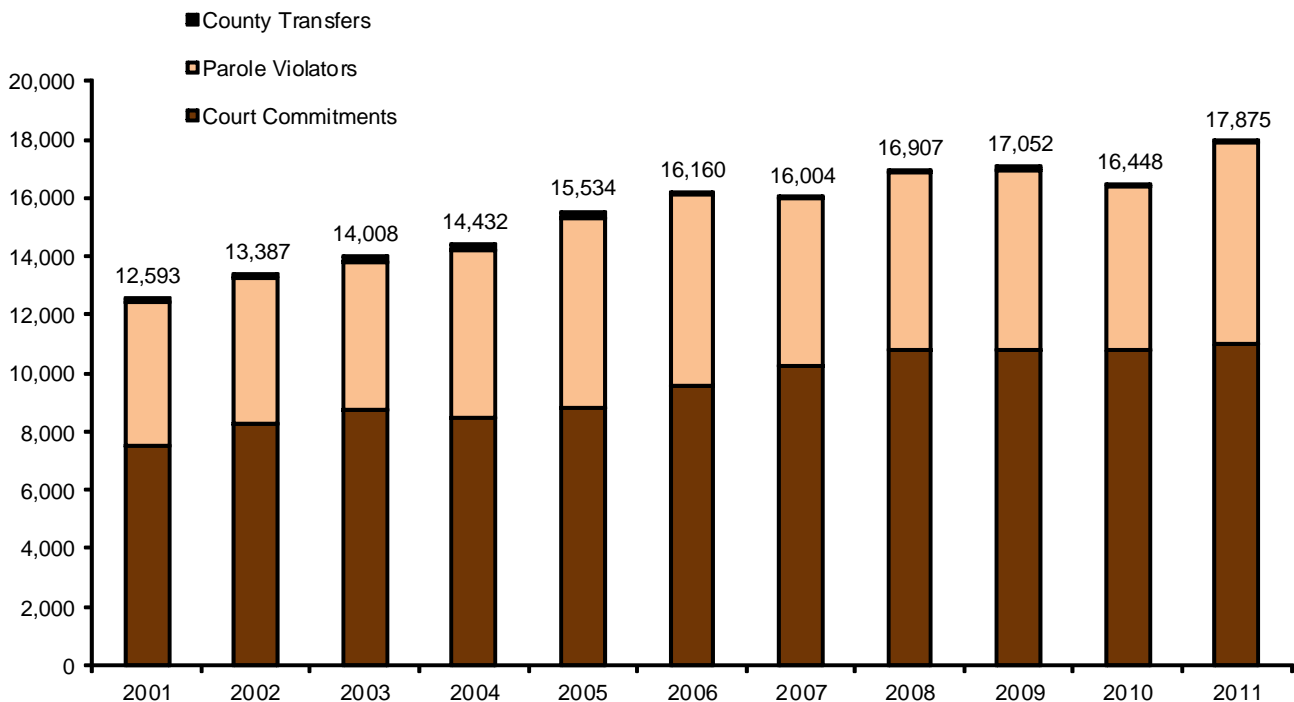
*NOTE – data includes new court commitments, parole violators and county transfers, but does not include other special types of admissions.

Table 1: State Prison Receptions by Type and Offender Gender—2001 through 2011

Year	Court Commitments			Parole Violators			County Transfers*			Annual Total
	Male	Female	Sub-total	Male	Female	Sub-total	Male	Female	Sub-total	
2001	6,924	586	7,510	4,682	273	4,955	122	6	128	12,593
2002	7,633	633	8,266	4,727	241	4,968	150	3	153	13,387
2003	8,067	693	8,760	4,786	242	5,028	215	5	220	14,008
2004	7,752	683	8,435	5,472	336	5,808	186	3	189	14,432
2005	8,027	803	8,830	6,186	319	6,505	196	3	199	15,534
2006	8,751	827	9,578	6,154	363	6,517	62	3	65	16,160
2007	9,326	896	10,222	5,473	280	5,753	27	2	29	16,004
2008	9,867	916	10,783	5,832	269	6,101	20	3	23	16,907
2009	9,878	920	10,798	5,782	385	6,167	75	12	87	17,052
2010	9,835	946	10,781	5,311	312	5,623	41	3	44	16,448
2011	10,005	964	10,969	6,460	440	6,900	6	0	6	17,875

*NOTE: Total admissions do not include other special types of admissions.

Graph 1: State Prison Receptions by Type - 2001 to 2011



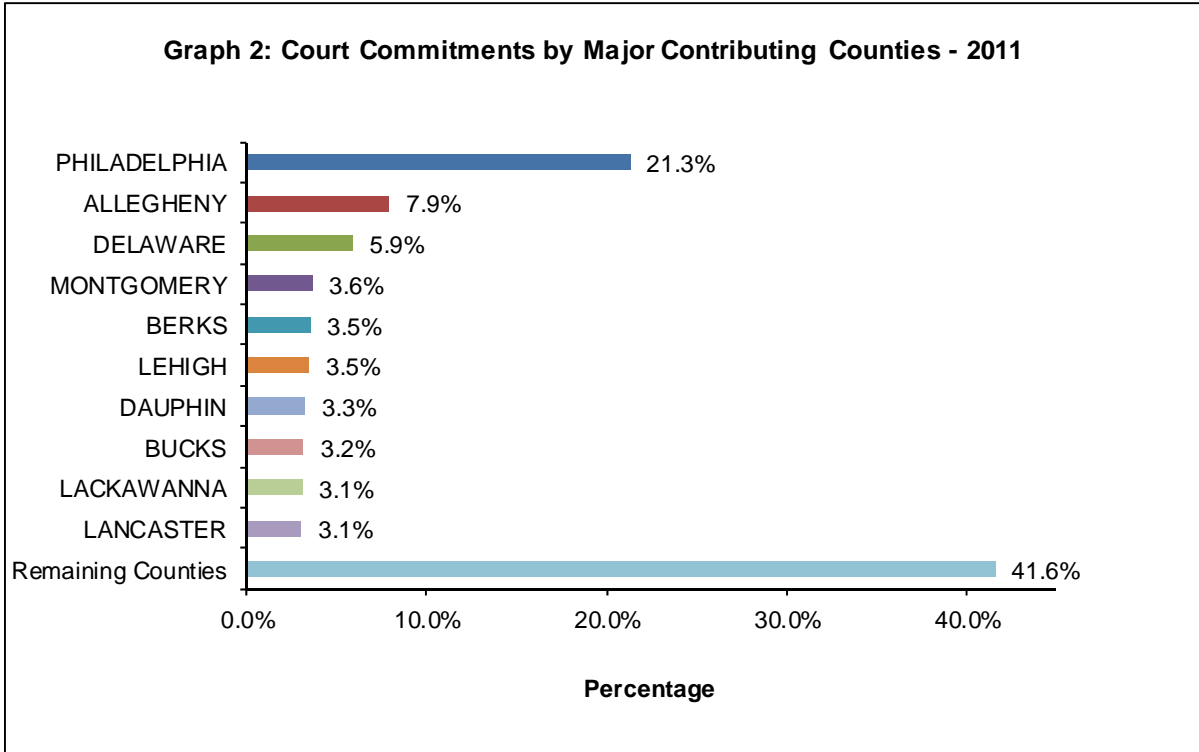
Receptions

Table 2: State Prison Receptions by Committing County and Offender Gender in 2011

County	Court Commitments			Parole Violators			County Transfers			Total			% of Total
	Male	Female	Sub-Total	Male	Female	Sub-Total	Male	Female	Sub-Total	Male	Female	Total	
Adams	114	23	137	50	10	60	0	0	0	164	33	197	1.1%
Allegheny	830	41	871	457	15	472	0	0	0	1,287	56	1,343	7.5%
Armstrong	24	2	26	8	1	9	0	0	0	32	3	35	0.2%
Beaver	88	7	95	35	1	36	0	0	0	123	8	131	0.7%
Bedford	45	5	50	22	1	23	0	0	0	67	6	73	0.4%
Berks	359	29	388	289	24	313	0	0	0	648	53	701	3.9%
Blair	126	23	149	61	7	68	0	0	0	187	30	217	1.2%
Bradford	48	5	53	34	2	36	0	0	0	82	7	89	0.5%
Bucks	306	43	349	120	3	123	1	0	1	427	46	473	2.6%
Butler	64	10	74	48	6	54	0	0	0	112	16	128	0.7%
Cambria	67	6	73	38	4	42	0	0	0	105	10	115	0.6%
Cameron	4	3	7	0	0	0	0	0	0	4	3	7	0.0%
Carbon	21	2	23	9	4	13	0	0	0	30	6	36	0.2%
Centre	56	3	59	21	3	24	0	0	0	77	6	83	0.5%
Chester	246	14	260	100	6	106	0	0	0	346	20	366	2.0%
Clarion	21	2	23	11	2	13	0	0	0	32	4	36	0.2%
Clearfield	89	15	104	58	8	66	0	0	0	147	23	170	1.0%
Clinton	25	4	29	15	1	16	0	0	0	40	5	45	0.3%
Columbia	18	9	27	17	3	20	0	0	0	35	12	47	0.3%
Crawford	73	10	83	29	0	29	0	0	0	102	10	112	0.6%
Cumberland	76	10	86	37	5	42	0	0	0	113	15	128	0.7%
Dauphin	335	22	357	329	20	349	0	0	0	664	42	706	3.9%
Delaware	574	73	647	222	15	237	0	0	0	796	88	884	4.9%
Elk	16	2	18	6	0	6	2	0	2	24	2	26	0.1%
Erie	273	33	306	187	21	208	0	0	0	460	54	514	2.9%
Fayette	140	46	186	111	10	121	0	0	0	251	56	307	1.7%
Forest	7	0	7	2	0	2	0	0	0	9	0	9	0.1%
Franklin	122	10	132	96	9	105	0	0	0	218	19	237	1.3%
Fulton	13	3	16	12	1	13	0	0	0	25	4	29	0.2%
Greene	18	4	22	16	3	19	0	0	0	34	7	41	0.2%
Huntingdon	34	4	38	14	3	17	0	0	0	48	7	55	0.3%
Indiana	30	4	34	29	3	32	0	0	0	59	7	66	0.4%
Jefferson	69	10	79	24	2	26	0	0	0	93	12	105	0.6%
Juniata	12	1	13	7	1	8	0	0	0	19	2	21	0.1%
Lackawanna	299	40	339	190	29	219	0	0	0	489	69	558	3.1%
Lancaster	300	35	335	184	13	197	1	0	1	485	48	533	3.0%
Lawrence	57	8	65	38	3	41	0	0	0	95	11	106	0.6%
Lebanon	112	16	128	87	6	93	1	0	1	200	22	222	1.2%
Lehigh	353	28	381	286	21	307	0	0	0	639	49	688	3.8%
Luzerne	110	8	118	140	13	153	0	0	0	250	21	271	1.5%
Lycoming	163	29	192	91	18	109	0	0	0	254	47	301	1.7%
McKean	66	13	79	14	2	16	0	0	0	80	15	95	0.5%
Mercer	76	11	87	50	6	56	0	0	0	126	17	143	0.8%
Mifflin	25	2	27	17	2	19	0	0	0	42	4	46	0.3%
Montgomery	365	35	400	198	17	215	0	0	0	563	52	615	3.4%
Monroe	137	17	154	47	2	49	0	0	0	184	19	203	1.1%
Montour	9	2	11	4	0	4	0	0	0	13	2	15	0.1%
Northampton	225	15	240	180	14	194	0	0	0	405	29	434	2.4%
Northumberland	67	14	81	34	6	40	0	0	0	101	20	121	0.7%
Perry	23	0	23	17	5	22	0	0	0	40	5	45	0.3%
Philadelphia	2,252	88	2,340	1,691	27	1,718	0	0	0	3,943	115	4,058	22.7%
Pike	50	12	62	16	1	17	0	0	0	66	13	79	0.4%
Potter	19	2	21	2	0	2	0	0	0	21	2	23	0.1%
Schuylkill	88	8	96	51	12	63	0	0	0	139	20	159	0.9%
Snyder	26	2	28	28	3	31	0	0	0	54	5	59	0.3%
Somerset	50	8	58	30	2	32	1	0	1	81	10	91	0.5%
Sullivan	2	0	2	3	0	3	0	0	0	5	0	5	0.0%
Susquehanna	25	3	28	6	0	6	0	0	0	31	3	34	0.2%
Tioga	20	1	21	13	1	14	0	0	0	33	2	35	0.2%
Union	23	4	27	30	2	32	0	0	0	53	6	59	0.3%
Unknown/Others	2	1	3	0	0	0	0	0	0	2	1	3	0.0%
Venango	71	15	86	39	6	45	0	0	0	110	21	131	0.7%
Warren	46	7	53	13	1	14	0	0	0	59	8	67	0.4%
Washington	122	14	136	49	11	60	0	0	0	171	25	196	1.1%
Wayne	30	6	36	38	7	45	0	0	0	68	13	81	0.5%
Westmoreland	141	17	158	70	3	73	0	0	0	211	20	231	1.3%
Wyoming	21	5	26	14	1	15	0	0	0	35	6	41	0.2%
York	287	20	307	276	12	288	0	0	0	563	32	595	3.3%
Total	10,005	964	10,969	6,460	440	6,900	6	0	6	16,471	1,404	17,875	100.0%

Note: Total may not equal 100% due to rounding.

Table 3: Ten Counties with the Highest Court Commitment Activity in 2011			
Rank	County	Court Commitments	% of State Total
1	PHILADELPHIA	2,340	21.3%
2	ALLEGHENY	871	7.9%
3	DELAWARE	647	5.9%
4	MONTGOMERY	400	3.6%
5	BERKS	388	3.5%
6	LEHIGH	381	3.5%
7	DAUPHIN	357	3.3%
8	BUCKS	349	3.2%
9	LACKAWANNA	339	3.1%
10	LANCASTER	335	3.1%
	Sub Total	6,407	58.4%
	Remaining Counties	4,562	41.6%
	State Total	10,969	100.0%



Receptions

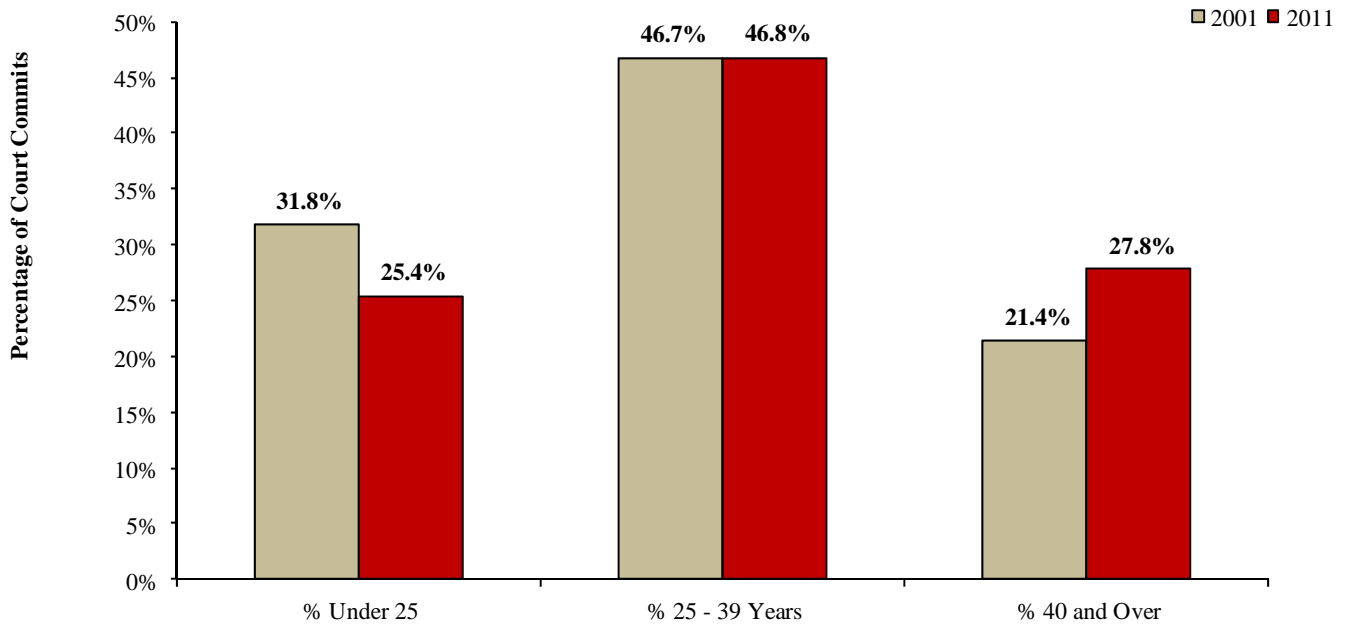
Table 4: Court Commitments by County for 2010 and 2011

County	Court Commitments		Growth Factor %
	2010	2011	
Adams	136	137	0.7
Allegheny	769	871	13.3
Armstrong	25	26	4.0
Beaver	85	95	11.8
Bedford	50	50	0.0
Berks	361	388	7.5
Blair	132	149	12.9
Bradford	66	53	-19.7
Bucks	305	349	14.4
Butler	97	74	-23.7
Cambria	79	73	-7.6
Cameron	1	7	600.0
Carbon	21	23	9.5
Centre	61	59	-3.3
Chester	267	260	-2.6
Clarion	26	23	-11.5
Clearfield	111	104	-6.3
Clinton	32	29	-9.4
Columbia	21	27	28.6
Crawford	61	83	36.1
Cumberland	87	86	-1.1
Dauphin	444	357	-19.6
Delaware	623	647	3.9
Elk	19	18	-5.3
Erie	224	306	36.6
Fayette	269	186	-30.9
Forest	8	7	-12.5
Franklin	111	132	18.9
Fulton	15	16	6.7
Greene	30	22	-26.7
Huntingdon	26	38	46.2
Indiana	40	34	-15.0
Jefferson	51	79	54.9
Juniata	5	13	160.0
Lackawanna	333	339	1.8
Lancaster	345	335	-2.9
Lawrence	63	65	3.2
Lebanon	132	128	-3.0
Lehigh	341	381	11.7
Luzerne	203	118	-41.9
Lycoming	142	192	35.2
McKean	51	79	54.9
Mercer	94	87	-7.4
Mifflin	45	27	-40.0
Montgomery	422	400	-5.2
Monroe	89	154	73.0
Montour	16	11	-31.3
Northampton	203	240	18.2
Northumberland	71	81	14.1
Perry	38	23	-39.5
Philadelphia	2,420	2,340	-3.3
Pike	57	62	8.8
Potter	6	21	250.0
Schuylkill	123	96	-22.0
Snyder	18	28	55.6
Somerset	53	58	9.4
Sullivan	4	2	0.0
Susquehanna	17	28	64.7
Tioga	13	21	61.5
Union	32	27	-15.6
Venango	76	86	13.2
Warren	69	53	-23.2
Washington	114	136	19.3
Wayne	40	36	-10.0
Westmoreland	117	158	35.0
Wyoming	22	26	18.2
York	348	307	-11.8
Unknown/Others	6	3	-50.0
Total	10,781	10,969	1.7

Table 5: Court Commitments Received from 2001 through 2011 by Age Group

Age	2001	2002	2003	2004	2005	2006	2007	2008	2009	2010	2011
Under 18	34	32	66	46	25	38	45	76	86	38	32
18-20	707	706	889	883	650	787	810	993	962	791	702
21-24	1,650	1,793	1,845	1,769	1,749	1,846	2,032	2,043	1,953	2,017	2,048
25-29	1,396	1,505	1,619	1,664	1,731	1,887	2,069	2,124	2,183	2,121	2,227
30-34	1,165	1,223	1,243	1,146	1,252	1,293	1,375	1,482	1,546	1,695	1,729
35-39	949	1,144	1,135	978	1,107	1,209	1,177	1,235	1,236	1,158	1,179
40-44	769	894	902	916	1,018	1,033	1,130	1,121	1,070	1,082	1,078
45-49	451	541	555	530	703	743	806	872	863	852	902
50-54	204	239	283	292	318	424	455	484	508	567	621
55-59	109	101	129	125	167	183	192	209	223	282	247
60-64	46	53	51	47	67	93	92	96	107	117	104
65 and Over	30	35	43	39	43	42	39	48	61	61	100
Total	7,510	8,266	8,760	8,435	8,830	9,578	10,222	10,783	10,798	10,781	10,969
% Under 25	31.8	30.6	32.0	32.0	27.5	27.9	28.2	28.9	27.8	26.4	25.4
% 25 - 39 Years	46.7	46.8	45.6	44.9	46.3	45.8	45.2	44.9	46.0	46.1	46.8
% 40 and Over	21.4	22.5	22.4	23.1	26.2	26.3	26.6	26.2	26.2	27.5	27.8

Graph 3: Percentage of Court Commitments by Age Group 2001 Compared to 2011



Receptions

Table 6: Profile of Court Commitments Received by Age, Race, and Gender in 2010

Age	Race								Gender				Total
	White		Black		Hispanic		Other		Male		Female		
	Number	%	Number	%	Number	%	Number	%	Number	%	Number	%	
Under 18	3	0.0%	31	0.3%	4	0.0%	0	0.0%	36	0.3%	2	0.0%	38
18-20	222	2.1%	474	4.4%	92	0.9%	3	0.0%	763	7.1%	28	0.3%	791
21-24	759	7.0%	1,039	9.6%	207	1.9%	12	0.1%	1,890	17.5%	127	1.2%	2,017
25-29	974	9.0%	860	8.0%	268	2.5%	19	0.2%	1,938	18.0%	183	1.7%	2,121
30-34	746	6.9%	718	6.7%	222	2.1%	9	0.1%	1,526	14.2%	169	1.6%	1,695
35-39	521	4.8%	444	4.1%	183	1.7%	10	0.1%	1,033	9.6%	125	1.2%	1,158
40-44	559	5.2%	381	3.5%	130	1.2%	12	0.1%	956	8.9%	126	1.2%	1,082
45-49	477	4.4%	305	2.8%	69	0.6%	1	0.0%	753	7.0%	99	0.9%	852
50-54	317	2.9%	197	1.8%	45	0.4%	8	0.1%	511	4.7%	56	0.5%	567
55-59	143	1.3%	111	1.0%	24	0.2%	4	0.0%	259	2.4%	23	0.2%	282
60-64	62	0.6%	44	0.4%	11	0.1%	0	0.0%	111	1.0%	6	0.1%	117
65 and Over	46	0.4%	11	0.1%	4	0.0%	0	0.0%	59	0.5%	2	0.0%	61
Total	4,829	44.8%	4,615	42.8%	1,259	11.7%	78	0.7%	9,835	91.2%	946	8.8%	10,781
% Under 25	20.4%	-	33.5%	-	24.1%	-	19.2%	-	27.3%	-	16.6%	-	26.4%
% 25 to 39	46.4%	-	43.8%	-	53.5%	-	48.7%	-	45.7%	-	50.4%	-	46.1%
% 40 & Over	33.2%	-	22.7%	-	22.5%	-	32.1%	-	26.9%	-	33.0%	-	27.5%

Table 7: Profile of Court Commitments Received by Age, Race, and Gender in 2011

Age	Race								Gender				Total
	White		Black		Hispanic		Other		Male		Female		
	Number	%	Number	%	Number	%	Number	%	Number	%	Number	%	
Under 18	6	0.1%	21	0.2%	4	0.0%	1	0.0%	31	0.3%	1	0.0%	32
18-20	178	1.6%	439	4.0%	83	0.8%	2	0.0%	680	6.2%	22	0.2%	702
21-24	753	6.9%	1,058	9.6%	219	2.0%	18	0.2%	1,922	17.5%	126	1.1%	2,048
25-29	1,097	10.0%	876	8.0%	234	2.1%	20	0.2%	2,013	18.4%	214	2.0%	2,227
30-34	793	7.2%	711	6.5%	219	2.0%	6	0.1%	1,571	14.3%	158	1.4%	1,729
35-39	533	4.9%	470	4.3%	167	1.5%	9	0.1%	1,053	9.6%	126	1.1%	1,179
40-44	540	4.9%	413	3.8%	123	1.1%	2	0.0%	955	8.7%	123	1.1%	1,078
45-49	490	4.5%	329	3.0%	79	0.7%	4	0.0%	788	7.2%	114	1.0%	902
50-54	319	2.9%	252	2.3%	48	0.4%	2	0.0%	571	5.2%	50	0.5%	621
55-59	129	1.2%	97	0.9%	21	0.2%	0	0.0%	229	2.1%	18	0.2%	247
60-64	59	0.5%	36	0.3%	9	0.1%	0	0.0%	97	0.9%	7	0.1%	104
65 and Over	74	0.7%	18	0.2%	7	0.1%	1	0.0%	95	0.9%	5	0.0%	100
Total	4,971	45.3%	4,720	43.0%	1,213	11.1%	65	0.6%	10,005	91.2%	964	8.8%	10,969
% Under 25	18.8%	-	32.2%	-	25.2%	-	32.3%	-	26.3%	-	15.5%	-	25.4%
% 25 to 39	48.7%	-	43.6%	-	51.1%	-	53.8%	-	46.3%	-	51.7%	-	46.8%
% 40 & Over	32.4%	-	24.3%	-	23.7%	-	13.8%	-	27.3%	-	32.9%	-	27.8%

Receptions

Table 9: Court Commitments by Minimum Sentence and Offender Gender in 2011

Minimum Sentence	Male		Female		Total	
	Number	%	Number	%	Number	%
1 Year And Under	2,231	22.3%	390	40.5%	2,621	23.9%
Over 1 To 2 Years	3,269	32.7%	334	34.6%	3,603	32.8%
Over 2 To 3 Years	1,604	16.0%	105	10.9%	1,709	15.6%
Over 3 To 5 Years	1,559	15.6%	85	8.8%	1,644	15.0%
Over 5 To 10 Years	757	7.6%	26	2.7%	783	7.1%
Over 10 To 20 Years	312	3.1%	17	1.8%	329	3.0%
Over 20 Years	125	1.2%	4	0.4%	129	1.2%
Life	145	1.4%	3	0.3%	148	1.3%
Death Sentence	3	0.0%	0	0.0%	3	0.0%
Not Reported As Of Year End	0	0.0%	0	0.0%	0	0.0%
Total	10,005	100.0%	964	100.0%	10,969	100.0%

Note: Five of the inmates with a life sentence had an offense other than murder.

Graph 4: Court Commitments by Minimum Sentence Distribution 2010 and 2011

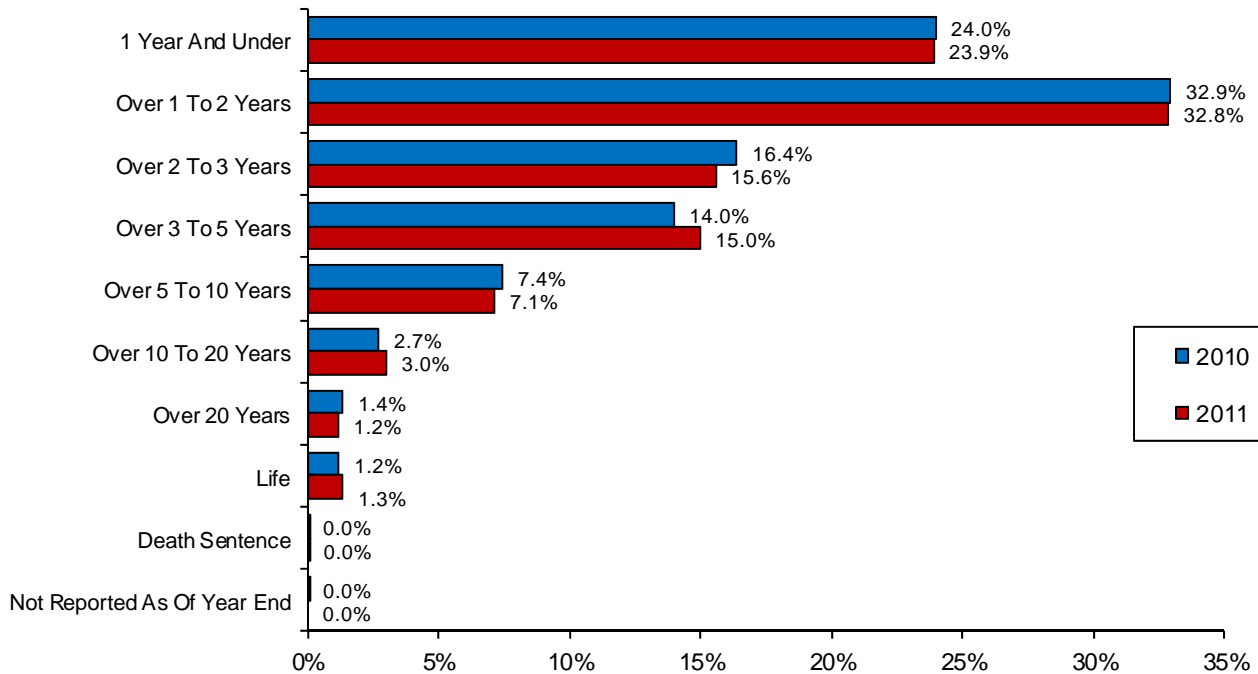
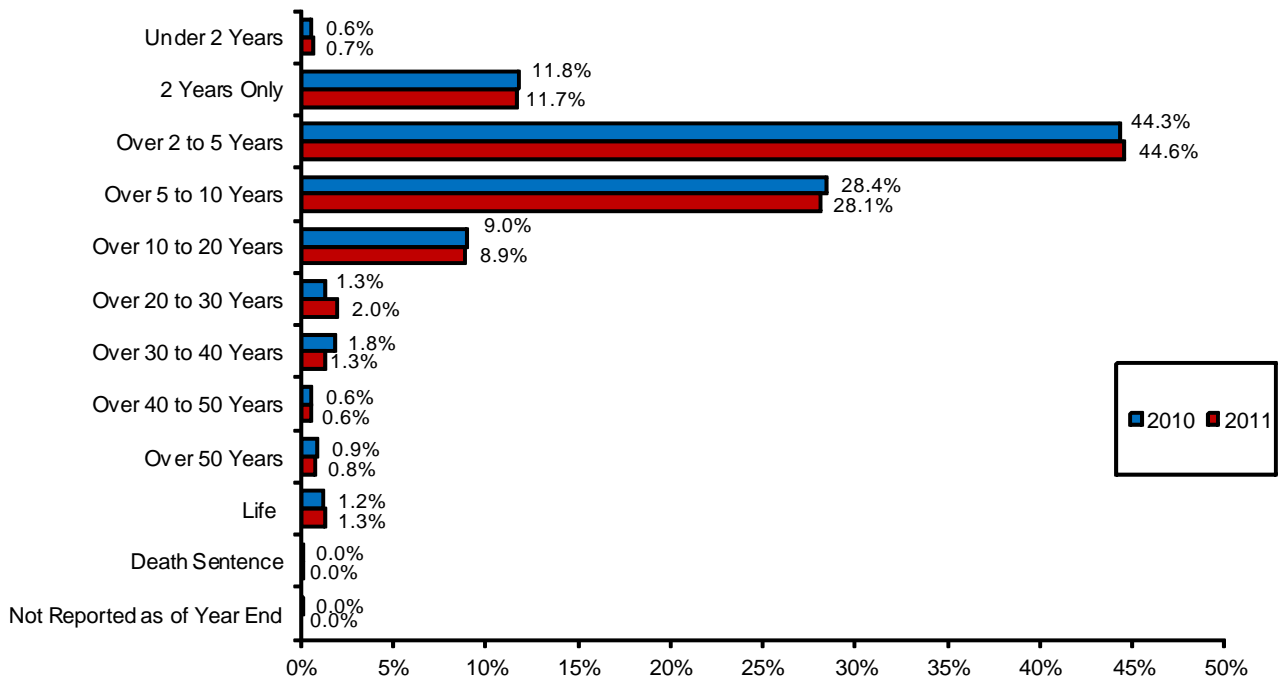


Table 10: Court Commitments by Maximum Sentence and Offender Gender in 2011

Maximum Sentence	Male		Female		Total	
	Number	%	Number	%	Number	%
Under 2 Years	41	0.4%	31	3.2%	72	0.7%
2 Years Only	1,130	11.3%	153	15.9%	1,283	11.7%
Over 2 to 5 Years	4,381	43.8%	506	52.5%	4,887	44.6%
Over 5 to 10 Years	2,875	28.7%	211	21.9%	3,086	28.1%
Over 10 to 20 Years	940	9.4%	36	3.7%	976	8.9%
Over 20 to 30 Years	208	2.1%	13	1.3%	221	2.0%
Over 30 to 40 Years	142	1.4%	6	0.6%	148	1.3%
Over 40 to 50 Years	59	0.6%	2	0.2%	61	0.6%
Over 50 Years	81	0.8%	3	0.3%	84	0.8%
Life	145	1.4%	3	0.3%	148	1.3%
Death Sentence	3	0.0%	0	0.0%	3	0.0%
Not Reported as of Year End	0	0.0%	0	0.0%	0	0.0%
Total	10,005	100.0%	964	100.0%	10,969	100.0%

Graph 5: Court Commitments By Maximum Sentence Distribution 2010 and 2011



Receptions

Table 11: Profile of Offenders Serving a Life Sentence Received from 2001 through 2011

Committing County	2001	2002	2003	2004	2005	2006	2007	2008	2009	2010	2011
Philadelphia	51	42	46	58	58	72	42	55	52	62	61
Allegheny	19	14	14	17	19	20	7	24	21	16	22
Other Counties	54	56	61	57	57	54	75	50	53	52	65
Total	124	112	121	132	134	146	124	129	126	130	148
Age	2001	2002	2003	2004	2005	2006	2007	2008	2009	2010	2011
Under 20	6	7	15	7	13	21	12	17	22	7	10
20 To 24	44	36	39	47	41	39	37	29	31	46	49
25 To 29	27	30	23	32	24	32	28	26	29	28	30
30 To 34	13	12	12	14	23	22	14	19	18	21	20
35 To 39	13	7	15	11	11	12	7	10	8	10	12
40 To 44	10	6	6	9	6	7	9	14	8	7	10
45 and Over	11	14	11	12	16	13	17	14	10	11	17
Race	2001	2002	2003	2004	2005	2006	2007	2008	2009	2010	2011
White	35	34	29	37	26	30	43	34	29	19	30
Non-White	89	78	92	95	108	116	81	95	97	111	118
Gender	2001	2002	2003	2004	2005	2006	2007	2008	2009	2010	2011
Male	122	110	116	127	127	140	115	120	122	124	145
Female	2	2	5	5	7	6	9	9	4	6	3
Total	124	112	121	132	134	146	124	129	126	130	148

Commonwealth of Pennsylvania
Department of Corrections



2011
Annual Statistical
Report

Section II

Population



2011
Annual Statistical
Report

Highlights

Population

The overall incarceration rate in Pennsylvania was 405 per 100,000 state residents in 2011. Nationally, the incarceration rate of state prisoners only (not including federal prisons) was 444 per 100,000 residents for year end 2010 (U.S. Bureau of Justice Statistics).

From 2010 to 2011, the number of inmates incarcerated has increased by 0.6%, from 51,321 to 51,638.

At the end of 2011, the population was comprised of 85.4% sentenced offenders and 14.1% parole violators.

A demographic breakdown of the Department's inmates indicates that offender age, race, and gender have remained relatively constant between 2010 and 2011.

In 2011, the majority of DOC offenders were African Americans (49%), followed by Caucasians (39%), Hispanic (11%), and other races (1%).

As of calendar year-end 2011, the DOC population consisted of 48,847 males and 2,791 females.

In 2011, the average minimum sentence length for Part One Offenders was 9.1 years and the average maximum sentence length was 20.1 years. For Part Two Offenders, the average minimum sentence length was 4.4 years and the average maximum sentence length was 10.0 years.

The number of inmates serving a minimum sentence of more than 20 years (excluding inmates serving life sentences and capital cases) increased by 7.7% from 1,908 in 2010 to 2,055 in 2011.

The following are characteristics of offenders serving life sentences in the Department:

The number of offenders serving a life sentence increased by 2.9%, from 4,829 in 2010 to 4,971 in 2011.

The average age of inmates serving life sentences in both 2010 and 2011 was 45 years. The average age of 45 years for inmates serving life sentences remains higher than the average age of 37 years for the total population.

The Department's population is currently projected to drop to 46,555 inmates by December 31, 2017. With the full impact of the Justice Reinvestment Initiative (JR) that the Commonwealth has recently undertaken, the Department's population is expected to drop by an additional 2,261 inmates, to a population of 44,294 by December 31, 2017.

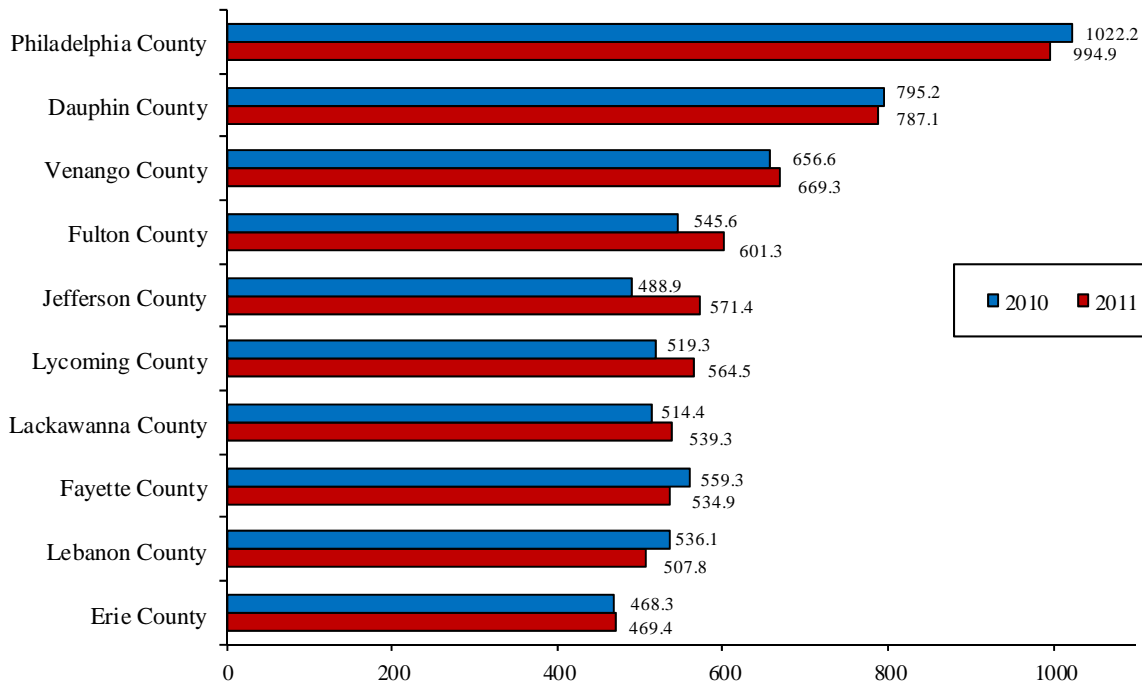
Table 12: Rank Order of Ten Counties with Highest State Incarceration Rate for 2010 and 2011*

Ranking	County	Incarceration Rate for 2010	Incarceration Rate for 2011	Percent Change
1	Philadelphia County	1022.2	994.9	-2.7%
2	Dauphin County	795.2	787.1	-1.0%
3	Venango County	656.6	669.3	1.9%
4	Fulton County	545.6	601.3	10.2%
5	Jefferson County	488.9	571.4	16.9%
6	Lycoming County	519.3	564.5	8.7%
7	Lackawanna County	514.4	539.3	4.8%
8	Fayette County	559.3	534.9	-4.4%
9	Lebanon County	536.1	507.8	-5.3%
10	Erie County	468.3	469.4	0.2%

* Ranking by incarceration rate per 100,000 residents. Note: incarceration rate calculations are based on the number of offenders incarcerated in the state prison system for each committing county. This rate does not include county or federal inmates.

Data based on estimated population and Census data provided by the Pennsylvania State Data Center.

Graph 6: Incarceration Rates for the Top Ten Counties 2010 and 2011



Population

Table 13: Inmate Population by County and Gender on December 31—Calendar Years 2010 and 2011

County	December 31, 2010				December 31, 2011			
	Male	Female	Total	% of Total	Male	Female	Total	% of Total
Adams	360	27	387	0.8%	370	47	417	0.8%
Allegheny	3,904	130	4,034	7.9%	4,069	143	4,212	8.2%
Armstrong	102	6	108	0.2%	102	5	107	0.2%
Beaver	319	9	328	0.6%	343	13	356	0.7%
Bedford	142	16	158	0.3%	142	11	153	0.3%
Berks	1,634	113	1,747	3.4%	1,622	104	1,726	3.3%
Blair	478	78	556	1.1%	492	71	563	1.1%
Bradford	235	15	250	0.5%	232	14	246	0.5%
Bucks	1,175	65	1,240	2.4%	1,216	79	1,295	2.5%
Butler	330	31	361	0.7%	305	26	331	0.6%
Cambria	280	16	296	0.6%	300	19	319	0.6%
Cameron	15	2	17	0.0%	10	4	14	0.0%
Carbon	102	5	107	0.2%	94	4	98	0.2%
Centre	225	15	240	0.5%	247	22	269	0.5%
Chester	1,185	64	1,249	2.4%	1,168	64	1,232	2.4%
Clarion	101	6	107	0.2%	85	7	92	0.2%
Clearfield	330	25	355	0.7%	295	24	319	0.6%
Clinton	87	16	103	0.2%	94	18	112	0.2%
Columbia	91	8	99	0.2%	97	13	110	0.2%
Crawford	264	19	283	0.6%	281	24	305	0.6%
Cumberland	344	28	372	0.7%	353	29	382	0.7%
Dauphin	2,030	102	2,132	4.2%	2,015	102	2,117	4.1%
Delaware	1,952	117	2,069	4.0%	2,052	141	2,193	4.2%
Elk	64	6	70	0.1%	67	7	74	0.1%
Erie	1,240	74	1,314	2.6%	1,245	74	1,319	2.6%
Fayette	675	89	764	1.5%	658	70	728	1.4%
Forest	20	1	21	0.0%	20	0	20	0.0%
Franklin	467	37	504	1.0%	483	40	523	1.0%
Fulton	76	5	81	0.2%	81	8	89	0.2%
Greene	107	11	118	0.2%	103	14	117	0.2%
Huntingdon	104	18	122	0.2%	126	22	148	0.3%
Indiana	140	7	147	0.3%	137	9	146	0.3%
Jefferson	196	25	221	0.4%	222	35	257	0.5%
Juniata	45	3	48	0.1%	50	4	54	0.1%
Lackawanna	1,017	86	1,103	2.1%	1,048	107	1,155	2.2%
Lancaster	1,520	104	1,624	3.2%	1,509	113	1,622	3.1%
Lawrence	273	24	297	0.6%	271	23	294	0.6%
Lebanon	665	51	716	1.4%	638	44	682	1.3%
Lehigh	1,279	65	1,344	2.6%	1,392	69	1,461	2.8%
Luzerne	835	64	899	1.8%	757	50	807	1.6%
Lycoming	548	55	603	1.2%	594	65	659	1.3%
McKean	123	11	134	0.3%	142	18	160	0.3%
Mercer	335	29	364	0.7%	349	30	379	0.7%
Mifflin	168	24	192	0.4%	145	15	160	0.3%
Monroe	374	30	404	0.8%	425	35	460	0.9%
Montgomery	1,543	109	1,652	3.2%	1,563	99	1,662	3.2%
Montour	50	7	57	0.1%	41	2	43	0.1%
Northampton	751	60	811	1.6%	792	57	849	1.6%
Northumberland	265	31	296	0.6%	251	32	283	0.5%
Perry	140	13	153	0.3%	140	12	152	0.3%
Philadelphia	15,165	434	15,599	30.4%	14,873	414	15,287	29.6%
Pike	138	21	159	0.3%	155	25	180	0.3%
Potter	46	0	46	0.1%	56	2	58	0.1%
Schuylkill	366	39	405	0.8%	362	28	390	0.8%
Snyder	139	10	149	0.3%	129	6	135	0.3%
Somerset	170	12	182	0.4%	176	12	188	0.4%
Sullivan	13	0	13	0.0%	10	0	10	0.0%
Susquehanna	74	2	76	0.1%	75	4	79	0.2%
Tioga	83	4	87	0.2%	90	5	95	0.2%
Union	137	7	144	0.3%	119	7	126	0.2%
Venango	330	31	361	0.7%	327	39	366	0.7%
Warren	167	22	189	0.4%	157	17	174	0.3%
Washington	456	33	489	1.0%	467	41	508	1.0%
Wayne	169	18	187	0.4%	164	21	185	0.4%
Westmoreland	576	32	608	1.2%	604	42	646	1.3%
Wyoming	87	5	92	0.2%	88	8	96	0.2%
York	1,718	91	1,809	3.5%	1,699	70	1,769	3.4%
Unknown/ Other	64	5	69	0.1%	63	12	75	0.1%
Total	48,603	2,718	51,321	100.0%	48,847	2,791	51,638	100.0%

Note: Totals may not equal 100% due to rounding.

Table 14: Rank-Ordered Comparison of Civilian Population and State Incarceration Rates for 2010 and 2011

County	2010			2011		
	Civilian Population*	Rate per 100,000	Rank	Civilian Population*	Rate per 100,000	Rank
Philadelphia	1,526,006	1022.2	1	1,536,471	994.9	1
Dauphin	268,100	795.2	2	268,977	787.1	2
Venango	54,984	656.6	3	54,683	669.3	3
Fulton	14,845	545.6	5	14,801	601.3	4
Jefferson	45,200	488.9	9	44,976	571.4	5
Lycoming	116,111	519.3	7	116,747	564.5	6
Lackawanna	214,437	514.4	8	214,166	539.3	7
Fayette	136,606	559.3	4	136,097	534.9	8
Lebanon	133,568	536.1	6	134,311	507.8	9
Erie	280,566	468.3	10	280,985	469.4	10
Blair	127,089	437.5	12	127,099	443.0	11
Warren	41,815	452.0	11	41,441	419.9	12
Berks	411,442	424.6	14	412,778	418.1	13
Lehigh	349,497	384.6	18	352,947	413.9	14
Adams	101,407	381.6	19	101,434	411.1	15
York	434,972	415.9	15	436,770	405.0	16
Delaware	558,979	370.1	21	559,494	392.0	17
Clearfield	81,642	434.8	13	81,445	391.7	18
Bradford	62,622	399.2	17	62,917	391.0	19
McKean	43,450	308.4	36	43,222	370.2	20
Wayne	52,822	354.0	22	53,004	349.0	21
Franklin	149,618	336.9	23	150,811	346.8	22
Crawford	88,765	318.8	30	88,740	343.7	23
Allegheny	1,223,348	329.8	26	1,227,066	343.3	24
Mifflin	46,682	411.3	16	46,858	341.5	25
Snyder	39,702	375.3	20	39,819	339.0	26
Wyoming	28,276	325.4	28	28,406	338.0	27
Potter	17,457	263.5	45	17,453	332.3	28
Perry	45,969	332.8	25	46,042	330.1	29
Mercer	116,638	312.1	34	116,205	326.1	30
Lawrence	91,108	326.0	27	90,535	324.7	31
Huntingdon	45,913	265.7	44	45,875	322.6	32
Pike	57,369	277.2	39	56,852	316.6	33
Lancaster	519,445	312.6	33	523,594	309.8	34
Bedford	49,762	317.5	31	49,739	307.6	35
Greene	38,686	305.0	37	38,623	302.9	36
Northumberland	94,528	313.1	32	94,558	299.3	37
Clinton	39,238	262.5	46	39,208	285.7	38
Northampton	297,735	272.4	41	298,476	284.4	39
Union	44,947	320.4	29	44,847	281.0	40
Cameron	5,085	334.3	24	5,010	279.4	41
Monroe	169,842	237.9	48	169,882	270.8	42
Schuylkill	148,289	273.1	40	147,513	264.4	43
Forest	7,716	272.2	42	7,589	263.5	44
Luzerne	320,918	280.1	38	320,651	251.7	45
Chester	498,886	250.4	47	503,897	244.5	46
Washington	207,820	235.3	49	208,282	243.9	47
Somerset	77,742	234.1	50	77,405	242.9	48
Montour	18,267	312.0	35	18,296	235.0	49
Elk	31,946	219.1	51	31,751	233.1	50
Clarion	39,988	267.6	43	40,013	229.9	51
Tioga	41,981	207.2	52	42,419	224.0	52
Cambria	143,679	206.0	54	143,728	221.9	53
Juniata	24,636	194.8	58	24,400	221.3	54
Beaver	170,539	192.3	59	170,414	208.9	55
Montgomery	799,874	206.5	53	804,210	206.7	56
Bucks	625,249	198.3	56	626,854	206.6	57
Susquehanna	43,356	175.3	60	43,192	182.9	58
Butler	183,862	196.3	57	184,848	179.1	59
Westmoreland	365,169	166.5	61	364,471	177.2	60
Centre	153,990	155.9	66	154,722	173.9	61
Indiana	88,880	165.4	62	89,298	163.5	62
Columbia	67,295	147.1	67	67,476	163.0	63
Cumberland	235,406	158.0	64	237,892	160.6	64
Armstrong	68,941	156.7	65	68,568	156.0	65
Sullivan	6,428	202.2	55	6,479	154.3	66
Carbon	65,249	164.0	63	65,154	150.4	67
Total	12,702,379	404.0		12,742,886	405.2	

* Data based on estimated population provided by the Pennsylvania State Data Center.

Population

Table 15: Inmate Population Versus State Institutional Capacity From 2001 through 2011

Year	Number of Inmates	Multiple Occupancy Capacity	Percent of Capacity
2001	38,067	33,757	112.2%
2002	40,172	34,583	115.7%
2003	40,850	34,240	118.9%
2004	41,000	37,570	108.8%
2005	42,486	38,357	110.5%
2006	44,450	38,547	114.9%
2007	46,028	41,692	110.2%
2008	49,307	43,298	113.7%
2009	51,487	43,584	117.9%
2010	51,321	43,837	117.1%
2011*	51,638	48,376	106.7%

Notes: The 2001-2004 percent of capacity does not include the Forensic Psychiatric Unit population at SCI Waymart. As of May 31, 2004, the Department began reporting "Operational Bed Capacity", which represents the optimal number of inmates that each facility can house based on a number of factors. In addition to cell size and security level, "Operational Bed Capacity" takes into consideration availability of inmate employment or programming, support services, and facility infrastructure. Prior capacity ratings were based solely on the physical characteristics of the cells (i.e., cell size and security level). This is not a change in how the Department operates. It is rather a change in how the Department assesses capacity with respect to quality of life and safety for both staff and inmates.

* As of September 1, 2011, the department changed its definition of bed capacity. "Bed Capacity" is defined as the number of inmates that the facility can accommodate by filling all beds based on a number of factors.

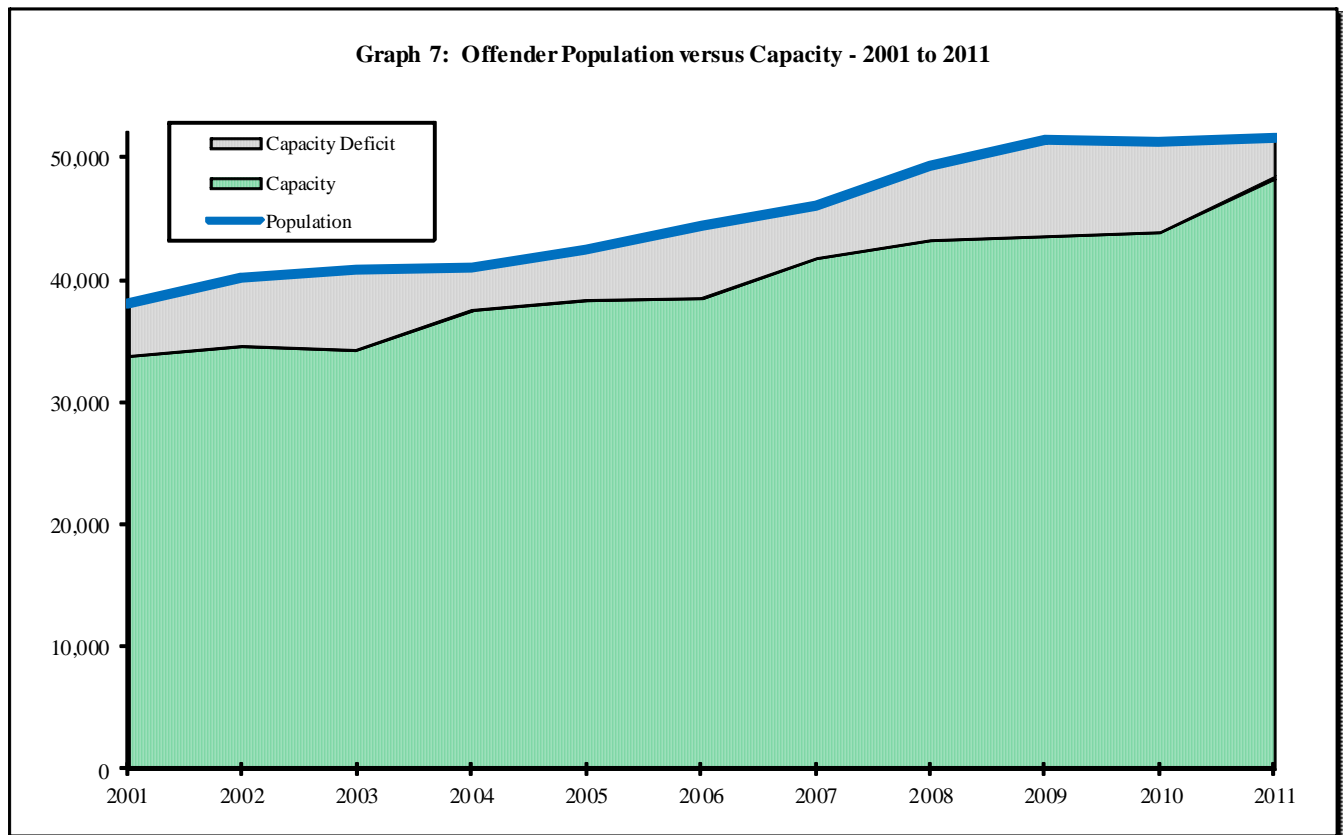
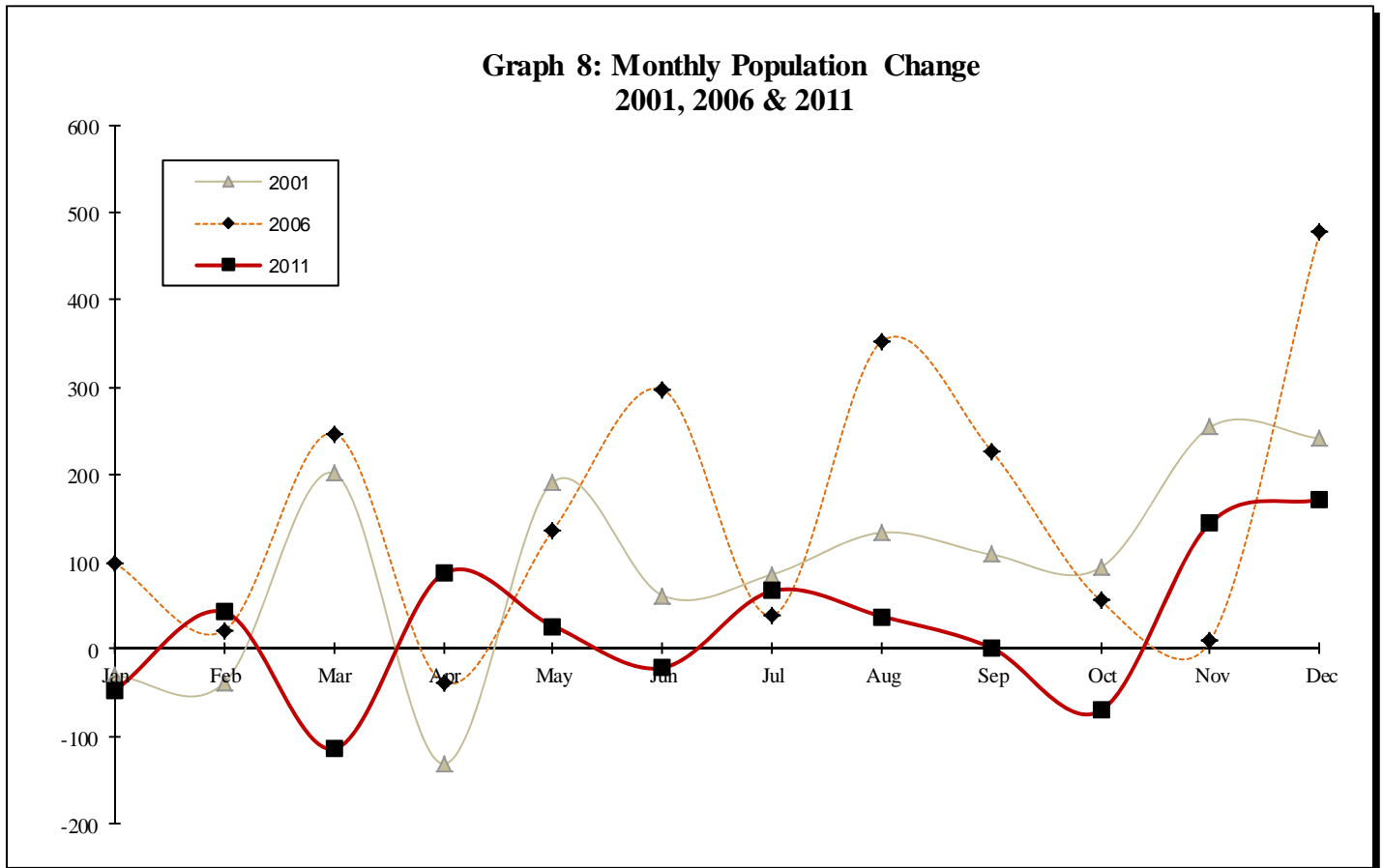


Table 16: Month-End Population 2001 through December 2011

Month	2001	2002	2003	2004	2005	2006	2007	2008	2009	2010	2011
January	36,799	38,195	40,394	40,836	40,948	42,544	44,625	46,019	49,215	51,390	51,273
February	36,760	38,397	40,556	40,809	41,012	42,565	44,753	45,944	49,345	51,349	51,315
March	36,961	38,660	40,606	40,873	41,134	42,812	45,177	45,981	49,666	51,457	51,200
April	36,829	38,734	40,662	40,901	41,347	42,773	45,201	46,198	50,161	51,361	51,286
May	37,020	39,074	40,744	40,822	41,484	42,909	45,505	46,241	50,310	51,317	51,312
June	37,081	39,136	40,437	40,697	41,582	43,206	45,484	46,369	50,622	51,281	51,290
July	37,166	39,283	40,639	40,627	41,700	43,244	45,625	46,492	50,945	51,240	51,356
August	37,299	39,268	40,783	40,524	41,910	43,596	45,588	46,816	50,957	51,257	51,393
September	37,407	39,295	40,818	40,633	42,073	43,823	45,703	46,883	51,022	51,236	51,394
October	37,500	39,571	40,859	40,726	41,992	43,878	45,935	47,942	51,334	51,322	51,323
November	37,754	39,776	40,777	40,674	42,307	43,887	45,922	48,691	51,403	51,193	51,467
December	38,067	40,172	40,850	41,000	42,486	44,450	46,028	49,307	51,487	51,321	51,638



Population

Table 17: Inmate Population by Facility, Race, Gender, and Age on December 31, 2010

Facility	Race				Gender		Age			Total
	White	Black	Hispanic	Other	Male	Female	Under 25	25 - 39	40 and Over	
Albion	1,007	1,087	207	11	2,312	0	193	1,150	969	2,312
Cambridge Springs	1,421	1,362	414	12	3,209	0	687	1,502	1,020	3,209
Camp Hill	581	272	69	10	0	932	68	439	425	932
Chester	434	546	283	4	1,267	0	164	660	443	1,267
Coal Township	772	1,063	217	9	2,061	0	453	922	686	2,061
Cresson	765	587	166	9	1,527	0	143	680	704	1,527
Dallas	784	1,114	242	10	2,150	0	203	948	999	2,150
Fayette	424	576	142	12	1,154	0	110	599	445	1,154
Forest	666	1,292	316	15	2,289	0	493	1,181	615	2,289
Frackville	707	1,144	196	18	2,065	0	232	1,022	811	2,065
Graterford	776	1,780	309	23	2,888	0	213	1,283	1,392	2,888
Greene	399	451	77	4	931	0	108	490	333	931
Greensburg	589	976	210	14	1,789	0	160	915	714	1,789
Houtzdale	841	1,208	234	14	2,297	0	579	970	748	2,297
Huntingdon	643	1,279	221	15	2,158	0	180	1,087	891	2,158
Laurel Highlands	621	451	122	8	1,202	0	92	386	724	1,202
Mahanoy	827	1,250	273	17	2,367	0	253	1,187	927	2,367
Mercer	817	552	119	9	1,497	0	132	614	751	1,497
Michigan	325	686	152	8	1,171	0	80	557	534	1,171
Muncy	794	512	109	30	0	1,445	200	675	570	1,445
Pine Grove	801	730	122	5	1,658	0	202	857	599	1,658
Pittsburgh	201	549	73	6	829	0	542	186	101	829
Quehanna Bootcamp	249	106	38	3	281	115	134	196	66	396
Retreat	431	570	132	6	1,139	0	183	518	438	1,139
Rockview	866	1,018	219	9	2,112	0	236	940	936	2,112
Smithfield	444	762	154	13	1,373	0	174	753	446	1,373
Somerset	767	1,228	251	20	2,266	0	384	1,121	761	2,266
Virginia	285	622	97	5	1,009	0	110	456	443	1,009
Waymart	811	378	139	5	1,333	0	72	420	841	1,333
C C Cs*	416	310	132	2	792	68	96	464	300	860
Group Homes	348	556	108	3	858	157	113	572	330	1,015
Federal	5	7	0	1	13	0	0	5	8	13
County Jail	188	333	78	8	607	0	131	307	169	607
% of Total	39.0%	49.4%	11.0%	0.7%	94.7%	5.3%	13.9%	46.9%	39.2%	100.0%
Total	20,005	25,357	5,621	338	48,604	2,717	7,120	24,062	20,139	51,321

* Community Corrections Centers

Table 18: Inmate Population by Facility, Race, Gender, and Age on December 31, 2011

Facility	Race				Gender		Age			Total
	White	Black	Hispanic	Other	Male	Female	Under 25	25 - 39	40 and Over	
Albion	1,010	1,043	213	16	2,282	0	209	1,063	1,010	2,282
Cambridge Springs	1,535	1,476	413	18	3,442	0	702	1,668	1,072	3,442
Camp Hill	563	277	72	16	0	928	76	433	419	928
Chester	428	565	262	6	1,261	0	215	700	346	1,261
Coal Township	710	1,064	245	9	2,028	0	352	946	730	2,028
Cresson	752	655	160	6	1,573	0	165	691	717	1,573
Dallas	811	1,064	228	8	2,111	0	185	918	1,008	2,111
Fayette	384	579	166	10	1,139	0	96	568	475	1,139
Forest	676	1,290	285	13	2,264	0	362	1,195	707	2,264
Frackville	720	1,125	186	17	2,048	0	217	972	859	2,048
Graterford	934	1,983	402	32	3,351	0	276	1,443	1,632	3,351
Greene	434	516	97	9	1,056	0	143	542	371	1,056
Greensburg	562	977	200	11	1,750	0	134	889	727	1,750
Houtzdale	943	1,244	239	16	2,442	0	536	1,066	840	2,442
Huntingdon	678	1,238	219	12	2,147	0	198	1,058	891	2,147
Laurel Highlands	676	521	155	11	1,363	0	108	475	780	1,363
Mahanoy	780	1,236	292	16	2,324	0	262	1,115	947	2,324
Mercer	781	538	134	6	1,459	0	140	593	726	1,459
Muncy	862	528	101	26	0	1,517	201	762	554	1,517
Pine Grove	725	778	76	5	1,584	0	211	868	505	1,584
Pittsburgh	194	597	106	4	901	0	491	257	153	901
Quehanna Bootcamp	275	187	36	0	442	56	144	270	84	498
Retreat	397	586	137	7	1,127	0	172	546	409	1,127
Rockview	935	1,172	256	13	2,376	0	242	1,104	1,030	2,376
Smithfield	421	754	172	18	1,365	0	197	724	444	1,365
Somerset	769	1,214	248	16	2,247	0	369	1,104	774	2,247
Waymart	865	408	178	7	1,458	0	71	491	896	1,458
C C Cs*	444	324	97	3	784	84	117	446	305	868
Group Homes	401	659	129	6	989	206	161	630	404	1,195
Federal	5	5	0	1	11	0	0	3	8	11
County Jail	434	911	165	13	1,523	0	225	740	558	1,523
% of Total	38.9%	49.4%	10.9%	0.7%	94.5%	5.4%	13.5%	47.0%	39.5%	100.0%
Total	20,104	25,514	5,669	351	48,847	2,791	6,977	24,280	20,381	51,638

* Community Corrections Centers

Table 19: Uniform Crime Report Offense Groupings by Inmate Race and Gender as of December 31, 2011

Part I Offenses	Race						Gender		Total	
	White	Black	Hispanic	Asian	Indian	Other	Male	Female	Number	Percent
Murder										
1st Degree	931	2,165	280	23	11	10	3,285	135	3,420	6.6%
2nd Degree	242	804	104	10	3	1	1,127	37	1,164	2.3%
3rd Degree	527	1,320	257	10	1	14	1,954	175	2,129	4.1%
Unspecified	261	599	99	8	1	1	953	16	969	1.9%
Voluntary Manslaughter	46	107	17	0	0	4	159	15	174	0.3%
Involuntary Manslaughter	24	18	4	0	0	0	37	9	46	0.1%
Homicide by Motor Vehicle	182	30	6	1		0	182	37	219	0.4%
Forcible Rape	1,500	1,264	261	3	6	7	3,019	22	3,041	5.9%
Robbery	1,274	2,855	422	4		22	4,428	149	4,577	8.9%
Aggravated Assault	1,172	2,310	429	8	5	22	3,736	210	3,946	7.6%
Burglary	1,480	730	191	4	3	9	2,321	96	2,417	4.7%
Theft (Including Motor Vehicle)	1,235	476	112	1	3	5	1,528	304	1,832	3.5%
Arson	176	50	18	0	0	1	224	21	245	0.5%
Total Part I Offenses	9,050	12,728	2,200	72	33	96	22,953	1,226	24,179	46.8%
Part II Offenses	Race						Gender		Total	
	White	Black	Hispanic	Asian	Indian	Other	Male	Female	Number	Percent
Other Assaults	184	98	28	0	1	0	295	16	311	0.6%
Fraud	94	41	5	0	1	1	113	29	142	0.3%
Receiving Stolen Property	193	107	29	0	0	1	313	17	330	0.6%
Forgery	197	58	10	0	1	1	199	68	267	0.5%
Statutory Rape	800	160	111	1		8	1,049	31	1,080	2.1%
Other Sex Offenses	1,820	609	213	6	3	5	2,591	65	2,656	5.1%
Narcotic Drug Laws	2,049	5,017	1,669	9	5	28	8,187	590	8,777	17.0%
Weapons	402	1,520	211	3	0	10	2,118	28	2,146	4.2%
DUI	921	93	40	1	0	4	949	110	1,059	2.1%
Prison Breach	122	87	21	0	0	1	206	25	231	0.4%
Kidnapping	91	120	25	0	0	1	226	11	237	0.5%
Other Part II Offenses	1,411	1,004	247	1	0	14	2,487	190	2,677	5.2%
Total Part II Offenses	8,284	8,914	2,609	21	11	74	18,733	1,180	19,913	38.6%
Parole Violators	2,592	3,825	837	26	6	9	6,973	322	7,295	14.1%
Detentioners/Other	178	47	23	0	1	2	188	63	251	0.5%
Total DOC	20,104	25,514	5,669	119	51	181	48,847	2,791	51,638	100.0%

Note: Totals based on percentages may be off due to rounding.

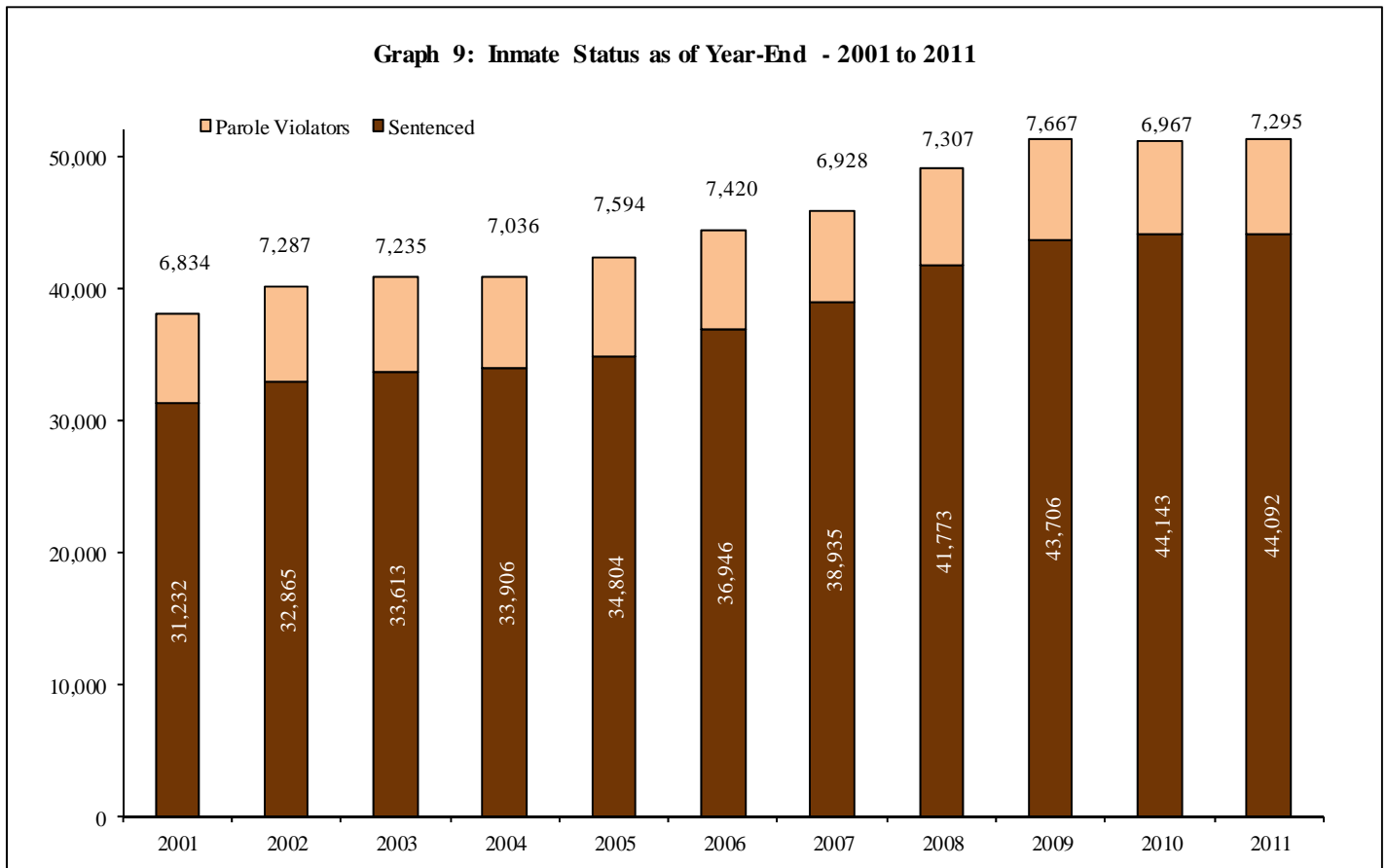
Population

Table 20: Status of Inmates on December 31—Calendar Years 2001 through 2011

Status	2001	2002	2003	2004	2005	2006	2007	2008	2009	2010	2011
Sentenced	31,232	32,865	33,613	33,906	34,804	36,946	38,935	41,773	43,706	44,143	44,092
Parole Violators	6,834	7,287	7,235	7,036	7,594	7,420	6,928	7,307	7,667	6,967	7,295
Detentioners	0	3	0	48	88	84	165	227	114	211	251
Unknown	1	17	2	10	0	0	0	0	0	0	0
Total	38,067	40,172	40,850	41,000	42,486	44,450	46,028	49,307	51,487	51,321	51,638
Percent Distribution	2001	2002	2003	2004	2005	2006	2007	2008	2009	2010	2011
Sentenced	82.0%	81.8%	82.3%	82.7%	78.3%	83.1%	84.6%	81.4%	84.9%	86.0%	85.4%
Parole Violators	18.0%	18.1%	17.7%	17.2%	17.1%	16.7%	15.1%	14.2%	14.9%	13.6%	14.1%
Detentioners	0.0%	0.0%	0.0%	0.1%	0.2%	0.2%	0.4%	0.4%	0.2%	0.4%	0.5%
Unknown	0.0%	0.0%	0.0%	0.0%	0.0%	0.0%	0.0%	0.0%	0.0%	0.0%	0.0%
Total	100.0%	100.0%	100.0%	100.0%	100.0%	100.0%	100.0%	100.0%	100.0%	100.0%	100.0%

Note: Totals may not equal 100% due to rounding.

Graph 9: Inmate Status as of Year-End - 2001 to 2011



**Table 21: Inmates by Primary Offense on December 31
Calendar Years 2010 and 2011 with 2011 Average Sentence Length**

Part I Offenses	2011		December 31, 2011		December 31, 2010	
	*Average Minimum (Years)	*Average Maximum (Years)	Number	% of Total	Number	% of Total
Murder						
1st Degree	Life or Death	Life or Death	3,420	6.6%	3,325	6.5%
2nd Degree	Life	Life	1,164	2.3%	1,123	2.2%
3rd Degree	17.7	37.0	2,129	4.1%	2,054	4.0%
Unspecified	18.2	38.3	969	1.9%	1,000	1.9%
Voluntary Manslaughter	8.8	18.7	174	0.3%	180	0.4%
Involuntary Manslaughter	3.9	8.8	46	0.1%	51	0.1%
Homicide by Motor Vehicle	4.8	10.9	219	0.4%	250	0.5%
Forcible Rape	13.8	31.1	3,041	5.9%	3,176	6.2%
Robbery	7.8	17.1	4,577	8.9%	4,678	9.1%
Aggravated Assault	7.6	16.9	3,946	7.6%	3,955	7.7%
Burglary	4.8	11.3	2,417	4.7%	2,257	4.4%
Theft (Including Motor Vehicle)	2.0	5.3	1,832	3.5%	1,820	3.5%
Arson	6.5	15.7	245	0.5%	240	0.5%
Total Part I Offenses	9.1	20.1	24,179	46.8%	24,109	47.0%
Part II Offenses	2011		December 31, 2011		December 31, 2010	
	*Average Minimum (Years)	*Average Maximum (Years)	Number	% of Total	Number	% of Total
Other Assaults	2.3	5.3	311	0.6%	306	0.6%
Fraud	1.8	5.2	142	0.3%	122	0.2%
Stolen Property	2.6	6.3	330	0.6%	351	0.7%
Forgery	2.5	7.1	267	0.5%	264	0.5%
Statutory Rape	12.2	26.1	1,080	2.1%	913	1.8%
Other Sex Offenses	4.5	10.9	2,656	5.1%	2,527	4.9%
Narcotic Drug Offenses	3.4	7.9	8,777	17.0%	9,121	17.8%
Weapons	3.7	7.9	2,146	4.2%	2,021	3.9%
DUI	1.6	4.3	1,059	2.1%	1,230	2.4%
Prison Breach	1.9	5.0	231	0.4%	247	0.5%
Kidnapping	15.3	32.6	237	0.5%	227	0.4%
Other Part II Offenses	5.9	13.2	2,677	5.2%	2,728	5.3%
Total Part II Offenses	4.4	10.0	19,913	38.6%	20,034	39.1%
Total Part I and II Offenses	6.7	14.9	44,092	85.4%	44,143	86.0%
Parole Violators	4.0	10.6	7,295	14.1%	6,967	13.6%
Detentioners/Other			251	0.5%	211	0.4%
Total DOC			51,638	100.0%	51,321	100.0%

* Average sentence length excludes lifers.

Note: Totals based on percentages may be off due to rounding.

Table 22: Demographic Profile of Inmates on December 31—Calendar Years 2010 and 2011

Item	December 31, 2010		December 31, 2011	
	Number	Percent	Number	Percent
Age				
Under 18	51	0.1%	43	0.1%
18-20	1,252	2.4%	1,176	2.3%
21-24	5,817	11.3%	5,758	11.2%
25-29	8,926	17.4%	9,031	17.5%
30-34	8,580	16.7%	8,685	16.8%
35-39	6,556	12.8%	6,564	12.7%
40-44	6,073	11.8%	6,005	11.6%
45-49	5,604	10.9%	5,507	10.7%
50-54	4,036	7.9%	4,150	8.0%
55-59	2,295	4.5%	2,373	4.6%
60-64	1,219	2.4%	1,322	2.6%
65 and Over	912	1.8%	1,024	2.0%
Average	37		37	
Race				
Black	25,357	49.4%	25,514	49.4%
White	20,005	39.0%	20,104	38.9%
Hispanic	5,621	11.0%	5,669	11.0%
Other	338	0.7%	351	0.7%
Gender				
Male	48,603	94.7%	48,847	94.6%
Female	2,718	5.3%	2,791	5.4%
Marital Status				
Single	37,835	73.7%	38,340	74.2%
Married	7,440	14.5%	7,338	14.2%
Divorced	3,684	7.2%	3,591	7.0%
Separated	1,492	2.9%	1,507	2.9%
Widowed	519	1.0%	542	1.0%
Unknown	351	0.7%	320	0.6%
Birthplace				
PA	36,676	71.5%	36,968	71.6%
USA Not PA	12,982	25.3%	13,060	25.3%
Foreign Born	1,261	2.5%	1,243	2.4%
Religion				
Protestant	15,537	30.3%	15,318	29.7%
Catholic	8,221	16.0%	8,005	15.5%
Moslem	9,991	19.5%	10,100	19.6%
Jewish	361	0.7%	390	0.8%
Other	8,863	17.3%	9,430	18.3%
No preference	8,348	16.3%	8,395	16.3%
Total	51,321	100.0%	51,638	100.0%

Note: Totals may not equal 100% due to rounding.

Table 23: Long-Term Inmates on December 31—Calendar Years 2010 and 2011

Minimum Sentence	December 31st		Change from 2010 to 2011	
	2010	2011	Number	Percent
Over 10 to 20 Years	4,670	4,839	169	3.6%
Over 20 Years	1,908	2,055	147	7.7%
Lifers	4,829	4,971	142	2.9%
Capital Cases	216	205	-11	-5.1%
Total	11,623	12,070	447	3.8%
Percent of Total Population	22.6%	23.4%	-	-

**Table 24: Number of Inmates by Facility Serving a Life Sentence on December 31
Calendar Years 2010 and 2011**

Institution	2010		2011		Percent Change 2010 - 2011
	Number	Percent	Number	Percent	
Albion	195	4.0%	245	4.9%	25.6%
Camp Hill	71	1.5%	79	1.6%	11.3%
Cambridge Springs	29	0.6%	29	0.6%	0.0%
Chester	26	0.5%	25	0.5%	-3.8%
Coal Township	177	3.7%	200	4.0%	13.0%
Cresson	69	1.4%	78	1.6%	13.0%
Dallas	393	8.1%	412	8.3%	4.8%
Frackville	132	2.7%	119	2.4%	-9.8%
Forest	167	3.5%	203	4.1%	21.6%
Fayette	290	6.0%	328	6.6%	13.1%
Graterford	690	14.3%	722	14.5%	4.6%
Greensburg	37	0.8%	68	1.4%	83.8%
Greene	319	6.6%	377	7.6%	18.2%
Houtzdale	148	3.1%	170	3.4%	14.9%
Huntingdon	388	8.0%	430	8.7%	10.8%
Laurel Highlands	77	1.6%	74	1.5%	-3.9%
Mahanoy	300	6.2%	318	6.4%	6.0%
Mercer	2	0.0%	3	0.1%	50.0%
Michigan	317	6.6%	0	0.0%	0.0%
Muncy	149	3.1%	152	3.1%	2.0%
Pittsburgh	42	0.9%	41	0.8%	-2.4%
Pine Grove	18	0.4%	20	0.4%	11.1%
Retreat	61	1.3%	65	1.3%	6.6%
Rockview	228	4.7%	262	5.3%	14.9%
Smithfield	158	3.3%	161	3.2%	1.9%
Somerset	217	4.5%	277	5.6%	27.6%
Virginia	113	2.3%	95	1.9%	0.0%
Waymart	13	0.3%	15	0.3%	15.4%
Lewisburg (Federal)	3	0.1%	3	0.1%	0.0%
Total	4,829	100.0%	4,971	100.0%	2.9%

Note: Totals may not equal 100% due to rounding.

**Table 25: Ten Highest Counties with Inmates Serving a Life Sentence
Calendar Years 2010 and 2011**

County	December 31, 2010		December 31, 2011	
	Number	% of Total	Number	% of Total
Philadelphia	2,508	51.9%	2,566	51.6%
Allegheny	501	10.4%	527	10.6%
Delaware	169	3.5%	173	3.5%
Dauphin	147	3.0%	153	3.1%
Montgomery	109	2.3%	113	2.3%
Berks	102	2.1%	104	2.1%
Lancaster	103	2.1%	104	2.1%
Bucks	100	2.1%	102	2.1%
York	90	1.9%	93	1.9%
Lehigh	76	1.6%	85	1.7%
Erie	71	1.5%	74	1.5%
Chester	71	1.5%	73	1.5%
Other Counties	782	16.2%	804	16.2%
Total	4,829	100.0%	4,971	100.0%

Note: Totals may not equal 100% due to rounding.

Table 26: Age of Inmates Serving a Life Sentence on December 31—Calendar Years 2010 and 2011

Age	December 31, 2010			December 31, 2011		
	Number	% of Total	Cumulative %	Number	% of Total	Cumulative %
Under 20	12	0.2%	0.2%	10	0.2%	0.2%
20 to 24	181	3.7%	4.0%	190	3.8%	4.0%
25 to 29	378	7.8%	11.8%	364	7.3%	11.3%
30 to 34	639	13.2%	25.1%	628	12.6%	24.0%
35 to 39	646	13.4%	38.4%	664	13.4%	37.3%
40 to 44	604	12.5%	50.9%	623	12.5%	49.9%
45 to 49	621	12.9%	63.8%	641	12.9%	62.8%
50 to 54	648	13.4%	77.2%	637	12.8%	75.6%
55 to 59	478	9.9%	87.1%	522	10.5%	86.1%
60 to 64	329	6.8%	93.9%	359	7.2%	93.3%
65 and Over	293	6.1%	100.0%	333	6.7%	100.0%
Total	4,829	100.0%		4,971	100.0%	
Average Age	45			45		

**Table 27 : Time Served by Inmates Serving Life as of December 31
Calendar Years 2010 and 2011**

Time Served	2010		2011	
	Number	% of Total	Number	% of Total
Under 5 Years	520	10.8%	538	10.8%
5 to 9.9 Years	734	15.2%	763	15.3%
10 to 14.9 Years	778	16.1%	720	14.5%
15 to 19.9 Years	854	17.7%	847	17.0%
20 to 24.9 Years	670	13.9%	742	14.9%
25 to 29.9 Years	551	11.4%	534	10.7%
30 to 34.9 Years	389	8.1%	424	8.5%
35 to 39.9 Years	227	4.7%	268	5.4%
40 Years and over	106	2.2%	135	2.7%
Total	4,829	100.0%	4,971	100.0%
Average (Years)	18.1		18.5	

Note: Totals may not equal 100% due to rounding.

**Table 28: Profile of Inmates Under Death Sentence on December 31
Calendar Years 2010 and 2011**

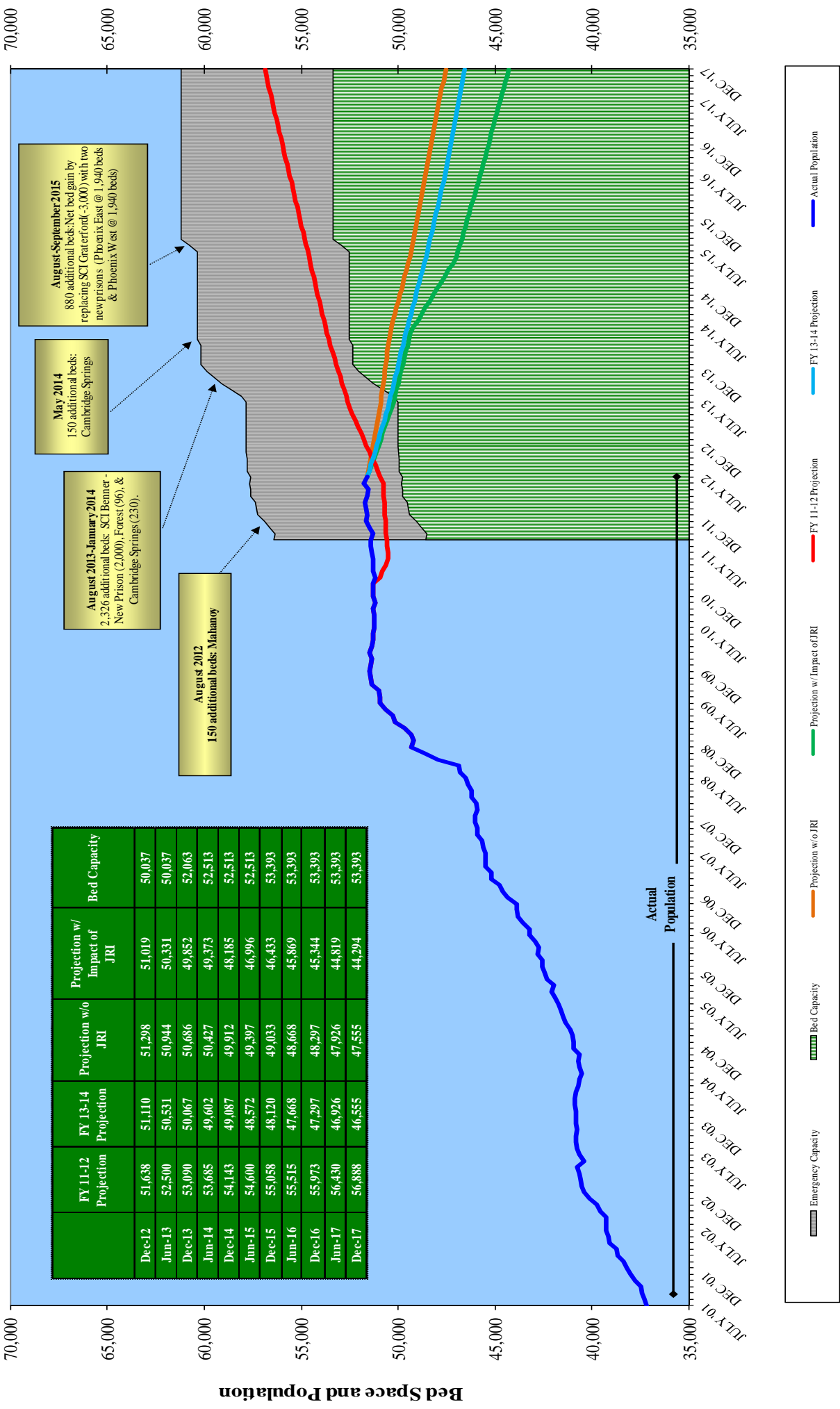
Category	December 31, 2010		December 31, 2011	
	Number	% of Total	Number	% of Total
County				
Philadelphia	105	47.7%	96	46.8%
Berks	12	5.5%	12	5.9%
Allegheny	9	4.1%	10	4.9%
York	8	3.6%	10	4.9%
Lehigh	6	2.7%	6	2.9%
Montgomery	6	2.7%	6	2.9%
Bucks	6	2.7%	5	2.4%
Lancaster	5	2.3%	5	2.4%
Cumberland	4	1.8%	4	2.0%
Fayette	4	1.8%	4	2.0%
Blair	3*	1.8%	3 [^]	1.5%
Bradford	3*	1.4%	3 [^]	1.5%
Other Counties	45	20.0%	41	20.0%
18 - 24	2	0.9%	1	0.5%
25 - 29	11	5.0%	9	4.4%
30 - 34	22	10.0%	22	10.7%
35 - 39	22	10.0%	22	10.7%
40 - 44	38	17.3%	37	18.0%
45 - 49	44	20.0%	38	18.5%
50 - 54	33	15.0%	36	17.6%
55 and Over	44	20.0%	40	19.5%
Average	46		46	
Race				
White	69	31.4%	67	32.7%
Black	127	57.7%	117	57.1%
Hispanic	18	8.2%	19	9.3%
Other	2	0.9%	2	1.0%
Gender				
Male	213	98.6%	202	98.5%
Female	3	1.4%	3	1.5%
Total	216	100.0%	205	100.0%

Note: Totals may not equal 100% due to rounding.

*Chester, Dauphin, Lebanon, Luzerne, and Northumberland also had 3 inmates per county under death sentence

[^]Chester, Dauphin, Lebanon, and Northumberland also had 3 inmates per county under death sentence

**Graph 10: Department of Corrections - Population vs. Bed Space
Impact of Justice Reinvestment (JRI)***



*Note: the JRI projection lines are unofficial projections, not used by DOC for their official budget submission

Commonwealth of Pennsylvania
Department of Corrections



2011
Annual Statistical
Report

Section III

Releases



2011
Annual Statistical
Report

Highlights

Releases

Overall, the average time served for all inmates released in 2011 serving both Part One and Part Two Offenses was 47.4 months.

The average time served for Part One Offenders released in 2011 was 66.0 months and the average time served for Part Two Offenders was 36.6 months.

The number of inmates initially released serving a sentence of two or more years hit an all time high of 12,199 in 2011, an increase of 6.0% over 2010.

Table 29: Average Time Served by Offense for Inmates Released During 2011

Part I Offenses	12/31/11 Number	Average Time Served (Months)	Average Time Served (Years)	% of Total
Murder				
1st Degree	25	342.5	28.5	0.1%
2nd Degree	7	233.0	19.4	0.0%
3rd Degree	136	160.1	13.3	0.7%
Unspecified	47	161.7	13.5	0.2%
Voluntary Manslaughter	41	91.0	7.6	0.2%
Involuntary Manslaughter	26	51.9	4.3	0.1%
Homicide by Motor Vehicle	80	50.1	4.2	0.4%
Forcible Rape	314	154.7	12.9	1.6%
Robbery	1,288	73.4	6.1	6.7%
Aggravated Assault	1,000	65.2	5.4	5.2%
Burglary	836	45.4	3.8	4.3%
Theft (Including Motor Vehicle)	1,194	29.3	2.4	6.2%
Arson	55	60.3	5.0	0.3%
Total Part I Offenses	5,049	66.0	5.5	26.1%
Part II Offenses	12/31/11 Number	Average Time Served (Months)	Average Time Served (Years)	% of Total
Other Assaults	201	26.2	2.2	1.0%
Fraud	76	25.7	2.1	0.4%
Stolen Property	244	38.5	3.2	1.3%
Forgery	159	32.7	2.7	0.8%
Statutory Rape	43	67.4	5.6	0.2%
Other Sex Offenses	510	57.8	4.8	2.6%
Narcotic Drug Offenses	4,411	35.9	3.0	22.8%
Weapons	720	40.0	3.3	3.7%
DUI	935	22.4	1.9	4.8%
Prison Breach	171	32.1	2.7	0.9%
Kidnapping	29	85.1	7.1	0.1%
Other Part II Offenses	1,239	40.2	3.3	6.4%
Total Part II Offenses	8,738	36.6	3.0	45.1%
Total Part I and II Offenses	13,787	47.4	3.9	71.2%
Parole Violators	3,822			19.7%
Other	1,755			9.1%
Total DOC	19,364			100.0%

Notes:

- 1) Calculation of average time served does not include non-recommit actions or reparaoles.
- 2) Totals may not equal 100% due to rounding.
- 3) In 2011, one of the 2nd degree murder releases was paroled. The remaining 1st and 2nd degree murder releases were inmate deaths.

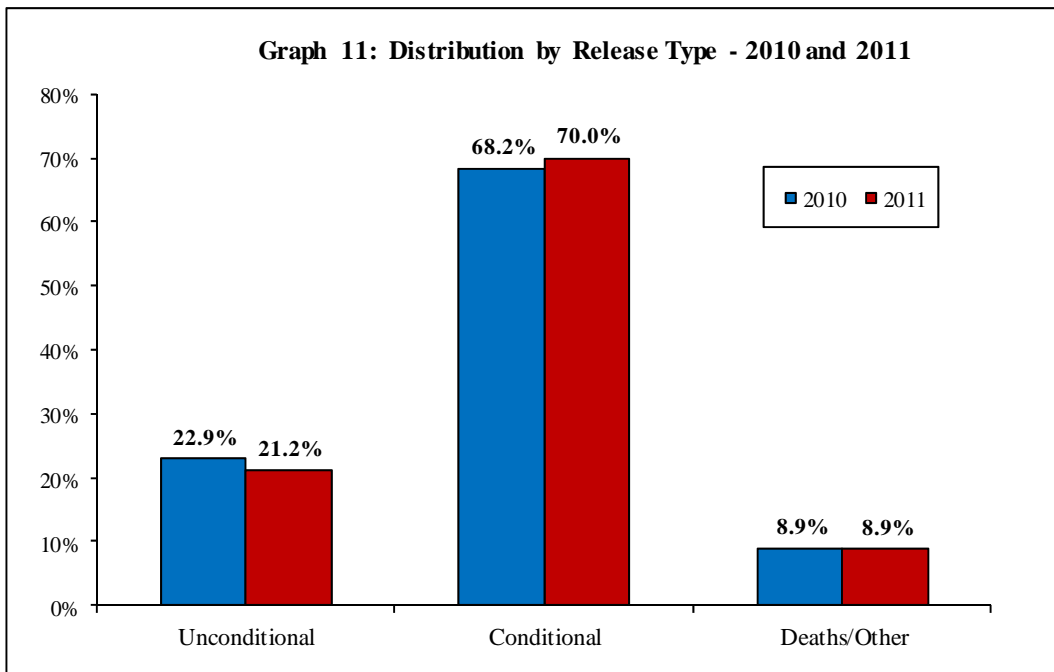
Table 30: Inmate Releases by Type—Calendar Years 2010 and 2011

Type of Release	2010		2011	
	Number	Percent	Number	Percent
Unconditional				
Maxed Out*	4,134	22.4%	4,011	20.7%
By Court Order	76	0.4%	92	0.5%
Total	4,210	22.9%	4,103	21.2%
Conditional				
State Parole	9,007	48.9%	9,667	49.9%
County Parole	45	0.2%	49	0.3%
Reparoled (State)	3,514	19.1%	3,830	19.8%
Total	12,566	68.2%	13,546	70.0%
Other Releases				
Deaths	143	0.8%	162	0.8%
Other**	1,498	8.1%	1,553	8.0%
Total	1,641	8.9%	1,715	8.9%
Total Releases	18,417	100.0%	19,364	100.0%

* Expiration of maximum sentence.

** Other includes transfers to state hospitals and other jurisdictions, and released detentioners.

Graph 11: Distribution by Release Type - 2010 and 2011

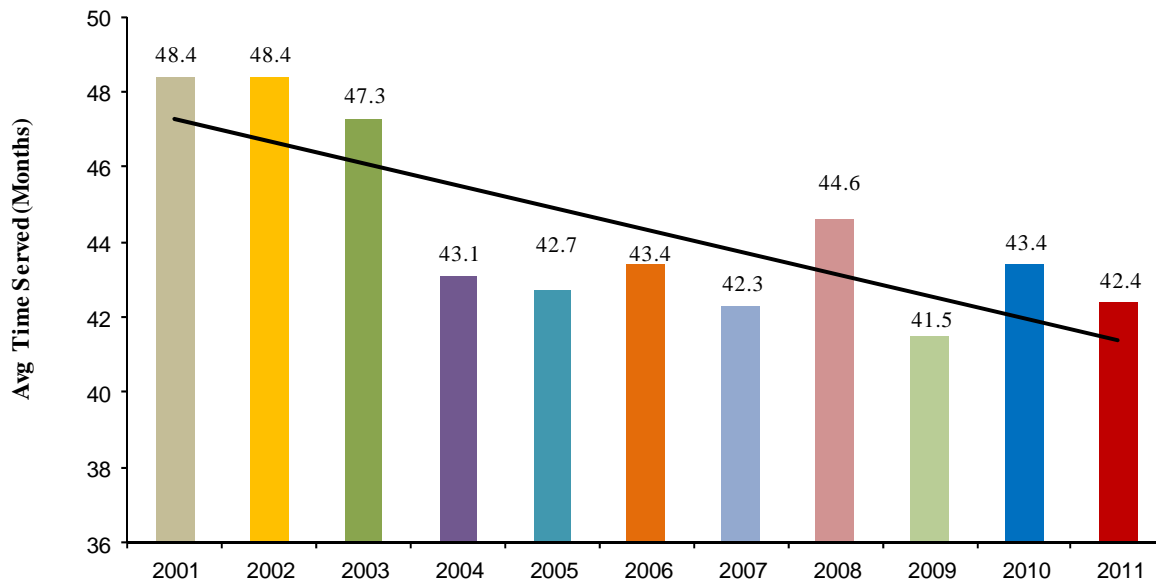


**Table 31: Average Months Served by Inmates Initially Released
Calendar Years 2001 through 2011**

Year Released	Maximum Sentence Under 2 Years		Maximum Sentence 2 Years and Over		All Sentences	
	Number Released	Average Time Served (Months)	Number Released	Average Time Served (Months)	Number Released	Average Time Served (Months)
2001	28	9.8	6,841	48.6	6,869	48.4
2002	29	13.8	6,809	48.8	6,838	48.4
2003	30	12.8	7,962	47.3	7,992	47.3
2004	30	13.7	9,046	43.2	9,076	43.1
2005	13	14.7	8,748	42.8	8,761	42.7
2006	18	16.8	8,507	43.4	8,525	43.4
2007	49	9.5	10,617	42.4	10,666	42.3
2008	20	10.5	9,159	44.6	9,179	44.6
2009	23	14.4	10,153	41.6	10,176	41.5
2010	20	14.8	11,511	43.5	11,531	43.4
2011	36	15.5	12,199	42.4	12,235	42.4

Note: Initial releases includes first time parolees, deaths, vacated sentences, vacated convictions and inmates who have reached their maximum sentence date. Initial releases does not include parole violators or inmates who have reached their maximum sentence date.

**Graph 12: Average Time Served by Inmates Released
Calendar Years 2001 through 2011**



**Table 32: Releases by Type for Inmates Serving a Life Sentence
Calendar Years 2001 through 2011**

Year Released	Commuted/Other*	Died	Total
2001	0	13	13
2002	0	31	31
2003	0	33	33
2004	2	35	37
2005	2	41	43
2006	5	15	20
2007	3	29	32
2008	1	29	30
2009	1	27	28
2010	0	32	32
2011**	3	30	33
Total	17	315	332

* Refers to commuted lifers or those whose Life Sentence was vacated and who were released from the PA DOC.

** In 2011, Commuted/Other includes one lifer who was bailed and another who was transferred to another state.

Commonwealth of Pennsylvania
Department of Corrections



2011
Annual Statistical
Report

Section IV

Miscellaneous



2011
Annual Statistical
Report

Highlights

Miscellaneous

There were no breach escapes from an institution in 2011. There was one walk away from outside an institution in 2011. This was the first walkaway since 2006. The inmate was apprehended the next day.

There were 222 walk aways from community correction centers in 2011.

The Department of Corrections' overall personnel complement consisted of 9,160 security staff and 5,513 other staff positions in 2011.

Table 33: Number of Breach Escapes from 2001 through 2011 by Facility

Institution/Facility	2001	2002	2003	2004	2005	2006	2007	2008	2009	2010	2011
Albion	0	0	0	0	0	0	1	0	0	0	0
Camp Hill	0	0	0	0	0	0	0	0	0	0	0
Cambridge Springs	0	0	0	0	0	0	0	0	0	0	0
Chester	0	0	0	0	0	0	0	0	0	0	0
Coal Township	0	0	0	0	0	0	0	0	0	0	0
Cresson	0	0	0	0	0	0	0	0	0	0	0
Dallas	0	0	0	0	0	0	0	0	0	0	0
Frackville	0	0	0	0	0	0	0	0	0	0	0
Forest	0	0	0	0	0	0	0	0	0	0	0
Fayette	-	-	0	0	0	0	0	0	0	0	0
Graterford	0	0	0	0	0	0	0	0	0	0	0
Greensburg	0	0	0	0	0	0	0	0	0	0	0
Greene	0	0	0	0	0	0	0	0	0	0	0
Houtzdale	0	0	0	0	0	0	0	0	0	0	0
Huntingdon	0	0	0	0	0	0	0	0	0	0	0
Laurel Highlands	0	0	0	0	0	0	0	0	0	0	0
Mahanoy	0	0	0	0	0	0	0	0	0	0	0
Mercer	0	0	0	0	0	0	0	0	0	0	0
Muncy	0	0	0	0	0	0	0	0	0	0	0
Pittsburgh	0	0	0	0	0	0	0	0	0	0	0
Pine Grove	0	0	0	0	0	0	0	0	0	0	0
Quehanna	0	0	0	0	0	0	0	0	0	0	0
Retreat	0	0	0	0	0	0	0	0	0	0	0
Rockview	0	0	0	0	0	0	0	0	0	0	0
Smithfield	0	0	0	0	0	0	0	0	0	0	0
Somerset	0	0	0	0	0	0	0	0	0	0	0
Waymart	0	0	0	0	0	0	0	0	0	0	0
Total	0	0	0	0	0	0	1	0	0	0	0

Table 34: Number of Walk Aways from 2001 through 2011 by Facility

Institution/Facility	2001	2002	2003	2004	2005	2006	2007	2008	2009	2010	2011
Albion	0	0	0	0	0	0	0	0	0	0	0
Camp Hill	0	0	0	0	0	0	0	0	0	0	0
Cambridge Springs	0	0	0	0	0	0	0	0	0	0	0
Chester	0	0	0	0	0	0	0	0	0	0	0
Coal Township	0	0	0	0	0	0	0	0	0	0	0
Cresson	0	0	0	0	0	0	0	0	0	0	0
Dallas	0	0	0	0	0	0	0	0	0	0	0
Frackville	0	0	0	0	0	0	0	0	0	0	0
Forest	0	0	0	0	0	0	0	0	0	0	0
Fayette	-	-	0	0	0	0	0	0	0	0	0
Graterford	0	0	0	0	0	0	0	0	0	0	0
Greensburg	0	0	0	0	0	0	0	0	0	0	0
Greene	0	0	0	0	0	0	0	0	0	0	0
Houtzdale	0	0	0	0	0	0	0	0	0	0	0
Huntingdon	0	0	0	0	1	1	0	0	0	0	0
Laurel Highlands	0	0	0	0	0	0	0	0	0	0	0
Mahanoy	0	0	0	0	0	0	0	0	0	0	0
Mercer	0	0	0	0	0	0	0	0	0	0	0
Muncy	0	0	0	0	0	0	0	0	0	0	0
Pittsburgh	0	0	0	0	0	0	0	0	0	0	0
Pine Grove	0	0	0	0	0	0	0	0	0	0	0
Quehanna	0	0	0	0	0	0	0	0	0	0	0
Retreat	0	0	0	0	0	0	0	0	0	0	0
Rockview	0	0	0	0	0	0	0	0	0	0	1
Smithfield	0	0	0	0	0	0	0	0	0	0	0
Somerset	0	0	0	0	0	0	0	0	0	0	0
Waymart	0	0	0	0	0	0	0	0	0	0	0
Sub-Total	0	0	0	0	1	1	0	0	0	0	1
CCS	161	126	126	109	86	156	276	168	94	164	222
Total	161	126	126	109	87	157	276	168	94	164	223

Institution Name	Other Staff		Other Staff Total	Security Staff		Security Staff Total	Grand Total
	Male	Female		Male	Female		
Albion	115	104	219	295	21	316	535
Camp Hill	197	177	374	506	72	578	952
Cambridge Springs	49	88	137	90	79	169	306
Chester	76	61	137	161	76	237	374
Coal Township	120	90	210	280	18	298	508
Cresson	110	81	191	294	17	311	502
Dallas	142	84	226	420	20	440	666
Frackville	79	58	137	266	11	277	414
Forest	106	116	222	362	25	387	609
Fayette	120	106	226	397	20	417	643
Graterford	189	174	363	584	156	740	1,103
Greensburg	76	57	133	223	14	237	370
Greene	125	101	226	447	23	470	696
Houtzdale	123	106	229	313	15	328	557
Huntingdon	121	102	223	399	15	414	637
Laurel Highlands	110	131	241	247	18	265	506
Mahanoy	110	99	209	301	18	319	528
Mercer	99	71	170	231	24	255	425
Muncy	91	121	212	170	130	300	512
Pittsburgh	101	88	189	306	22	328	517
Pine Grove	86	64	150	228	6	234	384
Quehanna	42	38	80	106	13	119	199
Retreat	80	65	145	216	14	230	375
Rockview	147	87	234	404	17	421	655
Smithfield	89	72	161	319	15	334	495
Somerset	120	89	209	313	12	325	534
Waymart	135	125	260	384	27	411	671
Grand Total	2,958	2,555	5,513	8,262	898	9,160	14,673

Commonwealth of Pennsylvania
Department of Corrections



2011
Annual Statistical
Report

Section V

Glossary

Capacity: “Operational Bed Capacity” represents the optimal number of inmates that each facility can house based on a number of factors. In addition to cell size and security level, “Operational Bed Capacity” takes into consideration availability of inmate employment or programming, support services, and facility infrastructure.

Capital cases: Inmate found guilty of first degree murder and sentenced by a judge to death by execution.

Commutations: A change of a legal penalty or punishment to a lesser one. A commutation for an inmate serving a life sentence is the establishment of a parole date.

Conditional release: The release of an inmate from the Department of Corrections to another supervising authority. This method of release includes the following types:

State Parole: When an inmate is released to the community and is supervised by the Pennsylvania Board of Probation and Parole.

County Parole: When an inmate is released to the community and is supervised by the county probation/parole department.

Reparoled (State): When an inmate is paroled from a state correctional facility, returned to the Department of Corrections for a parole violation, serves time in the institution, and is again released to the community under supervision of the Pennsylvania Board of Probation and Parole.

County transfers: When an inmate serving a county sentence is transferred to the Department of Corrections. The reason for the transfer could be for security, medical, or mental health reasons.

Court Commitments: A commitment imposed by a court sentencing an individual to confinement in a state correctional facility.

Detentioners: An inmate who has not been sentenced to a Pennsylvania state correctional facility, but who is being housed in a Pennsylvania state correctional facility at the request of another jurisdiction such as a county, another state, or the federal government.

Escape: The intentional act of an inmate to leave the custody of the Department of Corrections. The act of escape includes the following types:

Breach escape: When an inmate, in the process of intentionally leaving the custody of the Department of Corrections, compromises the secure perimeter of the facility.

Walk away: When an inmate intentionally leaves the custody of the DOC while on an authorized release or furlough (i.e., work detail, medical treatment, educational release, etc.). A walk away, as opposed to a breach escape, does not compromise the secure perimeter of the facility as it occurs outside the secure perimeter (i.e., wall, fence, etc.).

Incarceration rate: The number of state sentenced inmates incarcerated per 100,000 Pennsylvania residents.

Lifer: An individual with a minimum and maximum sentence of natural life.

Minimum sentence: The minimum amount of time imposed by the court that an inmate must serve before being eligible for release from prison. This sentence cannot exceed one-half of the maximum sentence under the Pennsylvania statute.

Maximum sentence: The maximum amount of time spent imposed by the court that an inmate can be required to serve before being released from prison.

Non-recommit action: The release of a parolee who was returned to the department as a possible parole violator. If the return action is not adjudicated as a parole violation, the parolee is re-released to parole.

Glossary

Offender: Generally refers to an individual who is convicted of an offense but who has not been received by the state prison system. This term is used in the Receptions Section of this report to denote newly admitted individuals.

Parole violators: Persons paroled from prison who violated the terms and/or conditions of their parole. Parole violators are generally classified as technical or convicted violators. Technical violators are recommitted for failure to adhere to the requirements of their parole plan (i.e., non-reporting to agent or program, non-criminal drug violations, etc.), while convicted violators are found guilty of new criminal offenses. A technical/convicted violator is committed for violating conditions of parole in addition to being charged with commission of a new criminal offense.

Part I Offenses: Offenses identified by the Uniform Crime Report which are of a serious nature and are usually reported to law enforcement agencies. Crimes identified as Part I Offenses include: criminal homicide, forcible rape, robbery, assault, burglary, larceny-theft, motor vehicle theft and arson.

Part II Offenses: Offenses not classified as Part I Offense as defined above because they are less serious crimes. Crimes identified as Part II offenses include: fraud, stolen property, forgery, narcotic drugs, and drunken driving (DUI).

Reparole: A parole release after a previous parole revocation. The initial parole and subsequent reparole occur during the same sentence.

Sentenced: Inmates who are serving time on court-imposed sentences. (Does not include inmates who are serving time because of parole violations.)

Uniform Crime Report (UCR) Offense Groupings: Offense classifications employed by Pennsylvania's criminal justice system. In order to remain compatible with the Federal Bureau of Investigation, the categories of offense classification utilized are the same as those employed at the national level. The crimes defined in this classification system are grouped as Part I or Part II offenses.

Unconditional release: The means of release for inmates who have either served their maximum sentence or have had their sentences reduced or vacated by the court (e.g., max out, executed, court order, etc.).